

# QUANT ANALYZER REPORT

LT-Reversal-Trender 2009.05.03 - 2019.05.04\_D1-H1

Source: MT4Report

Symbol: EURUSD    Period: H1 : 19.05.2009 - 03.05.2019  
 Initial deposit: 1000.0  
 Parameters: -

## TOTAL PROFIT

**\$ 5947.55**

PROFIT IN PIPS: 10129.5 PIPS  
 YRLY AVG PROFIT: \$ 600.22  
 YRLY AVG % RET: 60.02 %  
 CAGR: 19.27 %

# OF TRADES	522	SHARPE RATIO	0.19	PROFIT FACTOR	2.47	RETURN / DD RATIO	11.56	WINNING %	69.73 %
DRAWDOWN	\$ 514.64	% DRAWDOWN	37.1 %	DAILY AVG PROFIT	\$ 2.3	MTHLY AVG PROFIT	\$ 49.98	AVERAGE TRADE	\$ 26.9
ANNUAL% / MAX DD%	0.52	R EXPECTANCY	0.44 R	R EXP SCORE	23.44 R	SQN	5.97	SQN SCORE	1.13

generated by Quant Analyzer



## MONTHLY PERFORMANCE (\$)

Year	Jan	Feb	Mar	Apr	May	Jun	Jul	Aug	Sep	Oct	Nov	Dec	YTD
2019	-9.22	507.1	113.43	28.95	-26.21	0	0	0	0	0	0	0	614.05
2018	0	14.59	-6.69	269.26	0	14.64	-6.57	321.86	0	52.94	-46.47	0	613.56
2017	0	16.53	113.51	89.97	0	9.95	0	0	0	-122.14	-66.24	350.2	391.78
2016	175.72	58.92	1002.58	-48.14	163.77	47.04	0	-77.95	444.33	114.84	103.5	90.38	2074.99
2015	0	-103.12	43	46.28	77.2	91.34	48.24	3.43	232.49	91.86	0	-28.83	501.89
2014	0	7.74	-24.81	23.41	547.93	0	80.28	0	0	-350.98	-3.68	515.54	795.43
2013	5.45	-49.97	0	-268.39	289.12	69.08	65.57	0	100.33	30.69	51.93	-26.18	267.63
2012	-233.64	51.36	34.22	90.6	42.59	-31.84	0	200.02	0	-127.34	1.12	189.71	216.8
2011	-56.9	67.35	0	-307.45	123.66	17.14	132.58	70.68	153.53	-4.81	58.68	0	254.46
2010	13.2	0	36.05	89.8	-340.4	-55.88	0	92.15	55.79	28.77	49.42	0	-31.1
2009	0	0	0	0	0	-35.52	85.63	34.89	0	-81.2	35.95	208.31	248.06

## STATS

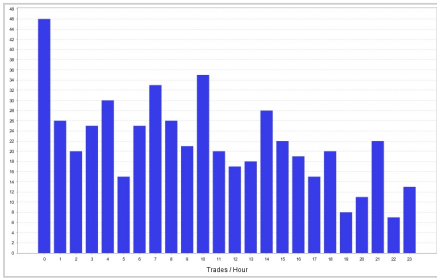
### Strategy

Wins/Losses Ratio	2.3	Payout Ratio (Avg Win/Loss)	1.07	Average # of Bars in Trade	0
AHPR	0.4	Z-Score	-11.51	Z-Probability	99.9 %
Expectancy	11.39	Deviation	\$ 46.28	Exposure	-99999999 %
Stagnation in Days	500	Stagnation in %	13.75 %		

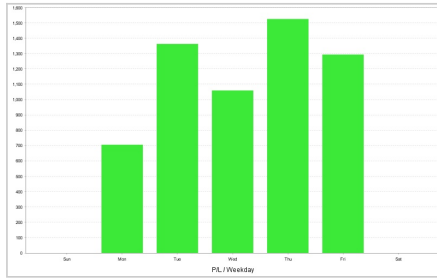
### Trades

# of Wins	364	# of Losses	158	# of Cancelled/Expired	0
Gross Profit	\$ 9993.63	Gross Loss	\$ -4046.08	Average Win	\$ 27.46
Largest Win	\$ 388.29	Largest Loss	\$ -104.42	Average Loss	\$ -25.61
		Max Consec Wins	29	Max Consec Losses	9

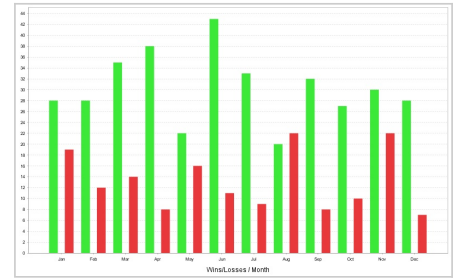
CHARTS



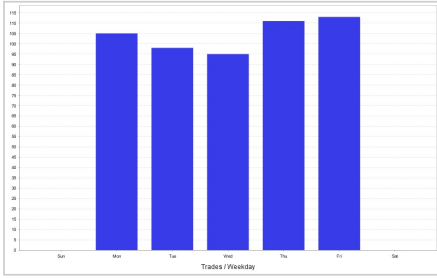
Trades by hour



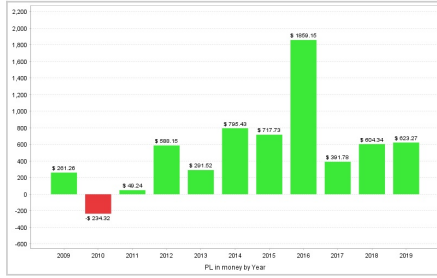
P/L by weekday



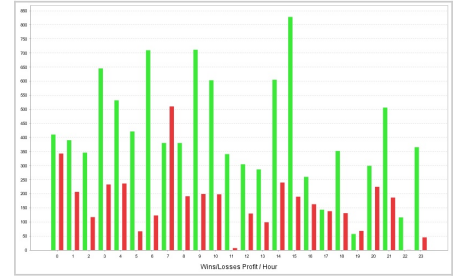
Wins/Losses by month



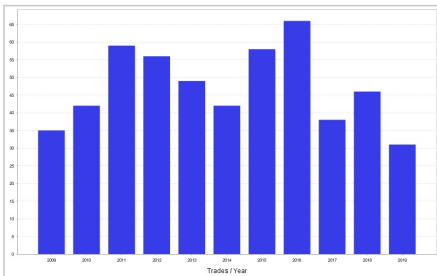
Trades by weekday



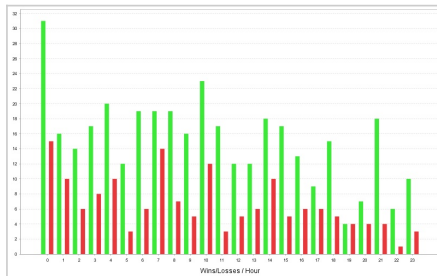
P/L by year



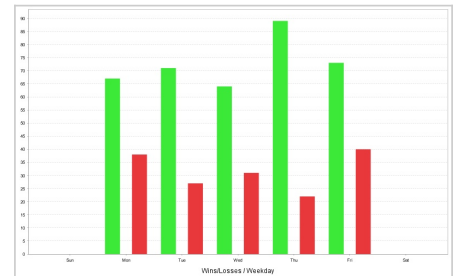
Wins/Losses Profit by hour



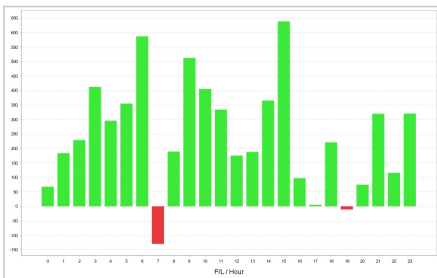
Trades by year



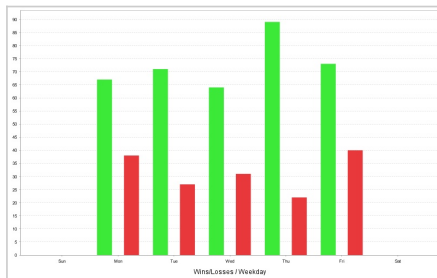
Wins/Losses by hour



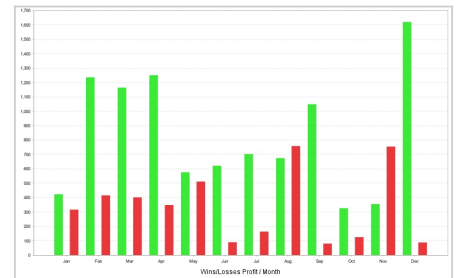
Wins/Losses by weekday



P/L by hour



Wins/Losses by weekday



Wins/Losses Profit by month

TRADES

Ticket	Type	Open time	Open price	Size	Close time	Close price	Profit/Loss	Comment
1	Sell	19.05.2009 03:00:00	1.3537	0.01	22.06.2009 00:00:00	1.395	\$ -39.23	
3	Sell	08.06.2009 00:00:00	1.39434	0.01	22.06.2009 00:00:00	1.395	\$ 0.19	
2	Sell	19.05.2009 14:00:00	1.36256	0.01	22.06.2009 00:00:00	1.395	\$ -30.37	
4	Sell	08.06.2009 07:00:00	1.39893	0.01	22.06.2009 00:00:00	1.395	\$ 4.78	
5	Buy	22.06.2009 17:00:00	1.38826	0.02	23.06.2009 16:04:00	1.40293	\$ 29.11	
6	Sell	26.06.2009 01:00:00	1.39849	0.01	07.07.2009 12:56:00	1.40093	\$ -1.77	
7	Sell	26.06.2009 09:00:00	1.40307	0.01	07.07.2009 12:56:00	1.40093	\$ 2.81	
8	Sell	26.06.2009 16:00:00	1.40682	0.01	07.07.2009 12:56:00	1.40093	\$ 6.56	
9	Sell	26.06.2009 22:00:00	1.40686	0.01	07.07.2009 12:56:00	1.40093	\$ 6.6	
10	Buy	10.07.2009 14:00:00	1.39169	0.02	15.07.2009 08:49:00	1.40636	\$ 28.21	
11	Sell	29.07.2009 01:00:00	1.41606	0.01	29.07.2009 19:02:00	1.40139	\$ 14.67	
12	Sell	29.07.2009 06:00:00	1.41692	0.01	29.07.2009 19:02:00	1.40139	\$ 15.53	
13	Sell	29.07.2009 12:00:00	1.41441	0.01	29.07.2009 19:02:00	1.40139	\$ 13.02	
14	Buy	17.08.2009 09:00:00	1.41528	0.01	21.08.2009 09:45:00	1.42995	\$ 14.22	
15	Buy	17.08.2009 18:00:00	1.40883	0.01	21.08.2009 09:45:00	1.42995	\$ 20.67	
16	Sell	31.08.2009 06:00:00	1.42871	0.01	06.10.2009 00:00:00	1.46489	\$ -33.99	
18	Sell	31.08.2009 20:00:00	1.43444	0.01	06.10.2009 00:00:00	1.46489	\$ -28.26	
17	Sell	31.08.2009 14:00:00	1.42752	0.01	06.10.2009 00:00:00	1.46489	\$ -35.18	

19	Sell	02.09.2009 03:00:00	1.4196	0.01	06.10.2009 00:00:00	1.46489	\$ -43.22
20	Buy	06.10.2009 16:00:00	1.47247	0.02	13.10.2009 13:50:00	1.48714	\$ 27.75
21	Sell	27.10.2009 01:00:00	1.48572	0.01	28.10.2009 19:29:00	1.47105	\$ 14.73
22	Sell	27.10.2009 10:00:00	1.48796	0.01	28.10.2009 19:29:00	1.47105	\$ 16.97
23	Buy	04.11.2009 06:00:00	1.47332	0.01	04.11.2009 20:15:00	1.48799	\$ 14.67
24	Buy	04.11.2009 14:00:00	1.47488	0.01	04.11.2009 20:15:00	1.48799	\$ 13.11
25	Sell	16.11.2009 00:00:00	1.49194	0.01	18.11.2009 10:34:00	1.49409	\$ -2.03
26	Sell	16.11.2009 04:00:00	1.49447	0.01	18.11.2009 10:34:00	1.49409	\$ 0.5
27	Sell	16.11.2009 11:00:00	1.49713	0.01	18.11.2009 10:34:00	1.49409	\$ 3.16
28	Sell	16.11.2009 18:00:00	1.49754	0.01	18.11.2009 10:34:00	1.49409	\$ 3.57
29	Sell	23.11.2009 13:00:00	1.49655	0.02	27.11.2009 16:41:00	1.49614	\$ 1.31
30	Sell	23.11.2009 18:00:00	1.49663	0.02	27.11.2009 16:41:00	1.49614	\$ 1.47
31	Sell	23.11.2009 23:00:00	1.49599	0.02	27.11.2009 16:41:00	1.49614	\$ 0.19
32	Sell	01.12.2009 04:00:00	1.50148	0.04	04.12.2009 19:27:00	1.48681	\$ 59.41
33	Sell	01.12.2009 06:00:00	1.50104	0.04	04.12.2009 19:27:00	1.48681	\$ 57.65
34	Sell	01.12.2009 21:00:00	1.50944	0.04	04.12.2009 19:27:00	1.48681	\$ 91.25
35	Buy	29.12.2009 06:00:00	1.43741	0.01	11.01.2010 04:17:00	1.45208	\$ 13.2
36	Buy	04.02.2010 01:00:00	1.38982	0.01	05.03.2010 00:00:00	1.35793	\$ -35.18
38	Buy	12.02.2010 00:00:00	1.36898	0.01	05.03.2010 00:00:00	1.35793	\$ -13.43
37	Buy	04.02.2010 07:00:00	1.38901	0.01	05.03.2010 00:00:00	1.35793	\$ -34.37
39	Buy	12.02.2010 07:00:00	1.36716	0.01	05.03.2010 00:00:00	1.35793	\$ -11.61
40	Sell	05.03.2010 01:00:00	1.35819	0.02	24.03.2010 06:06:00	1.34352	\$ 31.65
41	Sell	05.03.2010 08:00:00	1.35832	0.02	24.03.2010 06:06:00	1.34352	\$ 31.91
42	Sell	05.03.2010 13:00:00	1.35837	0.02	24.03.2010 06:06:00	1.34352	\$ 32.01
43	Sell	19.03.2010 00:00:00	1.36075	0.02	24.03.2010 06:06:00	1.34352	\$ 35.07
44	Buy	30.03.2010 00:00:00	1.34769	0.01	12.04.2010 00:21:00	1.36236	\$ 13.2
45	Buy	30.03.2010 02:00:00	1.34908	0.01	12.04.2010 00:21:00	1.36236	\$ 11.81
46	Buy	30.03.2010 06:00:00	1.34897	0.01	12.04.2010 00:21:00	1.36236	\$ 11.92
47	Sell	20.04.2010 05:00:00	1.34766	0.01	22.04.2010 14:33:00	1.33299	\$ 14.79
48	Sell	20.04.2010 08:00:00	1.34587	0.01	22.04.2010 14:33:00	1.33299	\$ 13.0
49	Sell	20.04.2010 15:00:00	1.3474	0.01	22.04.2010 14:33:00	1.33299	\$ 14.53
50	Sell	20.04.2010 23:00:00	1.34342	0.01	22.04.2010 14:33:00	1.33299	\$ 10.55
51	Buy	27.04.2010 00:00:00	1.33936	0.01	14.05.2010 10:59:00	1.24923	\$ -92.06
52	Buy	27.04.2010 07:00:00	1.33799	0.01	14.05.2010 10:59:00	1.24923	\$ -90.69
53	Buy	27.04.2010 17:00:00	1.33174	0.01	14.05.2010 10:59:00	1.24923	\$ -84.44
54	Buy	29.04.2010 00:00:00	1.32074	0.01	14.05.2010 10:59:00	1.24923	\$ -73.21
55	Buy	21.05.2010 02:00:00	1.25407	0.02	24.06.2010 00:00:00	1.231	\$ -53.85
57	Buy	21.05.2010 19:00:00	1.25489	0.02	24.06.2010 00:00:00	1.231	\$ -55.49
56	Buy	21.05.2010 15:00:00	1.25725	0.02	24.06.2010 00:00:00	1.231	\$ -60.21
58	Buy	01.06.2010 00:00:00	1.23074	0.02	24.06.2010 00:00:00	1.231	\$ -4.69
59	Sell	24.06.2010 07:00:00	1.23339	0.04	29.06.2010 10:25:00	1.21872	\$ 59.9
60	Sell	24.06.2010 21:00:00	1.23303	0.04	29.06.2010 10:25:00	1.21872	\$ 58.46
61	Sell	23.07.2010 04:00:00	1.28877	0.01	16.08.2010 02:25:00	1.2741	\$ 16.13
62	Sell	23.07.2010 09:00:00	1.28859	0.01	16.08.2010 02:25:00	1.2741	\$ 15.95
63	Sell	23.07.2010 14:00:00	1.29101	0.01	16.08.2010 02:25:00	1.2741	\$ 18.37
64	Sell	11.08.2010 02:00:00	1.3155	0.01	16.08.2010 02:25:00	1.2741	\$ 41.7
65	Buy	19.08.2010 08:00:00	1.28144	0.01	14.09.2010 16:32:00	1.29611	\$ 11.72
66	Buy	19.08.2010 12:00:00	1.28184	0.01	14.09.2010 16:32:00	1.29611	\$ 11.32
67	Buy	19.08.2010 22:00:00	1.28199	0.01	14.09.2010 16:32:00	1.29611	\$ 11.17
68	Buy	30.08.2010 09:00:00	1.27283	0.01	14.09.2010 16:32:00	1.29611	\$ 21.58
69	Sell	19.10.2010 04:00:00	1.39293	0.01	19.10.2010 17:07:00	1.37826	\$ 14.67
70	Sell	19.10.2010 13:00:00	1.39236	0.01	19.10.2010 17:07:00	1.37826	\$ 14.1
71	Sell	09.11.2010 01:00:00	1.38671	0.01	10.11.2010 15:43:00	1.37204	\$ 14.73
72	Sell	09.11.2010 10:00:00	1.38507	0.01	10.11.2010 15:43:00	1.37204	\$ 13.09
73	Sell	09.11.2010 16:00:00	1.39358	0.01	10.11.2010 15:43:00	1.37204	\$ 21.6
74	Buy	22.11.2010 00:00:00	1.37368	0.01	06.01.2011 00:00:00	1.31495	\$ -63.83
76	Buy	22.11.2010 21:00:00	1.36156	0.01	06.01.2011 00:00:00	1.31495	\$ -51.71
75	Buy	22.11.2010 09:00:00	1.3733	0.01	06.01.2011 00:00:00	1.31495	\$ -63.45
77	Buy	03.12.2010 07:00:00	1.32213	0.01	06.01.2011 00:00:00	1.31495	\$ -11.03
78	Sell	06.01.2011 04:00:00	1.31333	0.02	06.01.2011 23:26:00	1.29866	\$ 29.34

79	Sell	06.01.2011 08:00:00	1.31386	0.02	06.01.2011 23:26:00	1.29866	\$ 30.4
80	Sell	06.01.2011 10:00:00	1.31215	0.02	06.01.2011 23:26:00	1.29866	\$ 26.98
81	Sell	06.01.2011 17:00:00	1.30342	0.02	06.01.2011 23:26:00	1.29866	\$ 9.52
82	Buy	13.01.2011 00:00:00	1.31296	0.01	13.01.2011 14:48:00	1.32763	\$ 14.67
83	Buy	13.01.2011 09:00:00	1.31321	0.01	13.01.2011 14:48:00	1.32763	\$ 14.42
84	Buy	13.01.2011 14:00:00	1.31984	0.01	13.01.2011 14:48:00	1.32763	\$ 7.79
85	Sell	07.02.2011 01:00:00	1.35732	0.01	16.02.2011 07:52:00	1.35612	\$ 1.75
86	Sell	07.02.2011 07:00:00	1.3607	0.01	16.02.2011 07:52:00	1.35612	\$ 5.13
87	Sell	07.02.2011 11:00:00	1.36	0.01	16.02.2011 07:52:00	1.35612	\$ 4.43
88	Buy	18.02.2011 06:00:00	1.36065	0.02	23.02.2011 16:01:00	1.37532	\$ 28.21
89	Buy	18.02.2011 14:00:00	1.36084	0.02	23.02.2011 16:01:00	1.37532	\$ 27.83
90	Sell	11.03.2011 08:00:00	1.38044	0.01	27.04.2011 00:32:00	1.47057	\$ -87.27
91	Sell	11.03.2011 12:00:00	1.37707	0.01	27.04.2011 00:32:00	1.47057	\$ -90.64
92	Sell	28.03.2011 01:00:00	1.40228	0.01	27.04.2011 00:32:00	1.47057	\$ -66.46
93	Sell	28.03.2011 07:00:00	1.40566	0.01	27.04.2011 00:32:00	1.47057	\$ -63.08
94	Sell	06.05.2011 06:00:00	1.45409	0.02	06.05.2011 18:41:00	1.43942	\$ 29.34
95	Sell	06.05.2011 11:00:00	1.45204	0.02	06.05.2011 18:41:00	1.43942	\$ 25.24
96	Sell	06.05.2011 18:00:00	1.44976	0.02	06.05.2011 18:41:00	1.43942	\$ 20.68
97	Buy	19.05.2011 00:00:00	1.42512	0.01	31.05.2011 03:59:00	1.43979	\$ 13.31
98	Buy	19.05.2011 13:00:00	1.4271	0.01	31.05.2011 03:59:00	1.43979	\$ 11.33
99	Buy	19.05.2011 17:00:00	1.4253	0.01	31.05.2011 03:59:00	1.43979	\$ 13.13
100	Buy	30.05.2011 04:00:00	1.42905	0.01	31.05.2011 03:59:00	1.43979	\$ 10.63
101	Sell	10.06.2011 05:00:00	1.45286	0.01	10.06.2011 16:41:00	1.43819	\$ 14.67
102	Sell	10.06.2011 16:00:00	1.44066	0.01	10.06.2011 16:41:00	1.43819	\$ 2.47
103	Buy	22.06.2011 00:00:00	1.43991	0.01	01.07.2011 08:46:00	1.45458	\$ 13.65
104	Buy	22.06.2011 07:00:00	1.438	0.01	01.07.2011 08:46:00	1.45458	\$ 15.56
105	Buy	22.06.2011 15:00:00	1.43873	0.01	01.07.2011 08:46:00	1.45458	\$ 14.83
106	Buy	22.06.2011 21:00:00	1.43764	0.01	01.07.2011 08:46:00	1.45458	\$ 15.92
107	Sell	07.07.2011 07:00:00	1.43176	0.01	11.07.2011 08:51:00	1.41709	\$ 14.91
108	Sell	07.07.2011 10:00:00	1.42945	0.01	11.07.2011 08:51:00	1.41709	\$ 12.6
109	Buy	15.07.2011 12:00:00	1.41732	0.01	21.07.2011 14:46:00	1.43199	\$ 13.99
110	Buy	15.07.2011 18:00:00	1.41565	0.01	21.07.2011 14:46:00	1.43199	\$ 15.66
111	Buy	15.07.2011 23:00:00	1.41585	0.01	21.07.2011 14:46:00	1.43199	\$ 15.46
112	Sell	29.07.2011 02:00:00	1.43261	0.01	02.08.2011 09:12:00	1.41794	\$ 14.91
113	Sell	29.07.2011 08:00:00	1.42929	0.01	02.08.2011 09:12:00	1.41794	\$ 11.59
114	Sell	29.07.2011 14:00:00	1.42662	0.01	02.08.2011 09:12:00	1.41794	\$ 8.92
115	Sell	29.07.2011 21:00:00	1.43625	0.01	02.08.2011 09:12:00	1.41794	\$ 18.55
116	Buy	08.08.2011 00:00:00	1.43718	0.01	17.08.2011 09:06:00	1.43428	\$ -3.92
117	Buy	08.08.2011 08:00:00	1.434	0.01	17.08.2011 09:06:00	1.43428	\$ -0.74
118	Buy	08.08.2011 18:00:00	1.4241	0.01	17.08.2011 09:06:00	1.43428	\$ 9.16
119	Buy	08.08.2011 22:00:00	1.42105	0.01	17.08.2011 09:06:00	1.43428	\$ 12.21
120	Sell	23.08.2011 07:00:00	1.43718	0.02	02.09.2011 08:13:00	1.42251	\$ 30.56
121	Sell	23.08.2011 15:00:00	1.44424	0.02	02.09.2011 08:13:00	1.42251	\$ 44.68
122	Sell	23.08.2011 21:00:00	1.44236	0.02	02.09.2011 08:13:00	1.42251	\$ 40.92
123	Sell	26.08.2011 05:00:00	1.44077	0.02	02.09.2011 08:13:00	1.42251	\$ 37.37
124	Buy	16.09.2011 06:00:00	1.38634	0.01	17.10.2011 13:05:00	1.37817	\$ -11.68
125	Buy	16.09.2011 13:00:00	1.38119	0.01	17.10.2011 13:05:00	1.37817	\$ -6.53
126	Buy	16.09.2011 16:00:00	1.38313	0.01	17.10.2011 13:05:00	1.37817	\$ -8.47
127	Buy	29.09.2011 04:00:00	1.35568	0.01	17.10.2011 13:05:00	1.37817	\$ 20.45
128	Sell	19.10.2011 00:00:00	1.37336	0.02	20.10.2011 21:47:00	1.37898	\$ -11.12
129	Sell	19.10.2011 10:00:00	1.38105	0.02	20.10.2011 21:47:00	1.37898	\$ 4.26
130	Sell	19.10.2011 14:00:00	1.3818	0.02	20.10.2011 21:47:00	1.37898	\$ 5.76
131	Sell	19.10.2011 16:00:00	1.38018	0.02	20.10.2011 21:47:00	1.37898	\$ 2.52
132	Sell	01.11.2011 04:00:00	1.38457	0.04	01.11.2011 10:28:00	1.3699	\$ 58.68
133	Buy	08.11.2011 04:00:00	1.37587	0.01	05.01.2012 09:54:00	1.28574	\$ -96.7
134	Buy	08.11.2011 09:00:00	1.3733	0.01	05.01.2012 09:54:00	1.28574	\$ -94.13
135	Buy	08.11.2011 14:00:00	1.37916	0.01	05.01.2012 09:54:00	1.28574	\$ -99.99
136	Buy	08.11.2011 20:00:00	1.38359	0.01	05.01.2012 09:54:00	1.28574	\$ -104.42
137	Buy	13.01.2012 04:00:00	1.28222	0.02	19.01.2012 22:12:00	1.29689	\$ 27.98
138	Buy	13.01.2012 22:00:00	1.26844	0.02	19.01.2012 22:12:00	1.29689	\$ 55.54

139	Buy	18.01.2012 01:00:00	1.27473	0.02	19.01.2012 22:12:00	1.29689	\$ 44.09
140	Buy	18.01.2012 09:00:00	1.27978	0.02	19.01.2012 22:12:00	1.29689	\$ 33.99
141	Sell	02.02.2012 06:00:00	1.31654	0.01	16.02.2012 03:22:00	1.30187	\$ 15.52
142	Sell	02.02.2012 10:00:00	1.31399	0.01	16.02.2012 03:22:00	1.30187	\$ 12.97
143	Sell	02.02.2012 14:00:00	1.31077	0.01	16.02.2012 03:22:00	1.30187	\$ 9.75
144	Sell	02.02.2012 21:00:00	1.31414	0.01	16.02.2012 03:22:00	1.30187	\$ 13.12
145	Sell	02.03.2012 04:00:00	1.331	0.01	05.03.2012 10:12:00	1.31633	\$ 14.85
146	Sell	02.03.2012 09:00:00	1.3268	0.01	05.03.2012 10:12:00	1.31633	\$ 10.65
147	Buy	09.03.2012 06:00:00	1.32682	0.01	29.03.2012 14:30:00	1.32528	\$ -3.81
148	Buy	09.03.2012 22:00:00	1.31156	0.01	29.03.2012 14:30:00	1.32528	\$ 11.45
149	Buy	20.03.2012 02:00:00	1.32409	0.01	29.03.2012 14:30:00	1.32528	\$ 0.17
150	Buy	20.03.2012 06:00:00	1.32335	0.01	29.03.2012 14:30:00	1.32528	\$ 0.91
151	Sell	03.04.2012 06:00:00	1.33396	0.02	04.04.2012 03:44:00	1.31929	\$ 29.46
152	Sell	03.04.2012 14:00:00	1.33071	0.02	04.04.2012 03:44:00	1.31929	\$ 22.96
153	Sell	03.04.2012 21:00:00	1.32159	0.02	04.04.2012 03:44:00	1.31929	\$ 4.72
154	Buy	12.04.2012 00:00:00	1.31108	0.01	26.04.2012 09:35:00	1.32575	\$ 13.08
155	Buy	12.04.2012 05:00:00	1.31381	0.01	26.04.2012 09:35:00	1.32575	\$ 10.35
156	Buy	12.04.2012 13:00:00	1.31413	0.01	26.04.2012 09:35:00	1.32575	\$ 10.03
157	Sell	03.05.2012 01:00:00	1.31541	0.01	07.05.2012 00:10:00	1.30074	\$ 14.91
158	Sell	03.05.2012 11:00:00	1.31401	0.01	07.05.2012 00:10:00	1.30074	\$ 13.51
159	Sell	03.05.2012 18:00:00	1.31467	0.01	07.05.2012 00:10:00	1.30074	\$ 14.17
160	Buy	22.05.2012 08:00:00	1.27975	0.01	22.06.2012 00:00:00	1.25475	\$ -28.51
162	Buy	05.06.2012 00:00:00	1.24956	0.01	22.06.2012 00:00:00	1.25475	\$ 3.26
161	Buy	22.05.2012 15:00:00	1.27493	0.01	22.06.2012 00:00:00	1.25475	\$ -23.69
163	Buy	05.06.2012 15:00:00	1.24298	0.01	22.06.2012 00:00:00	1.25475	\$ 9.84
164	Sell	22.06.2012 06:00:00	1.2553	0.02	29.06.2012 05:00:00	1.25404	\$ 3.37
165	Sell	22.06.2012 10:00:00	1.2534	0.02	29.06.2012 05:00:00	1.25404	\$ -0.43
166	Sell	22.06.2012 14:00:00	1.25496	0.02	29.06.2012 05:00:00	1.25404	\$ 2.69
167	Sell	22.06.2012 18:00:00	1.25443	0.02	29.06.2012 05:00:00	1.25404	\$ 1.63
168	Buy	17.07.2012 03:00:00	1.22803	0.04	06.08.2012 01:40:00	1.2427	\$ 49.61
169	Buy	17.07.2012 10:00:00	1.22896	0.04	06.08.2012 01:40:00	1.2427	\$ 45.89
170	Buy	17.07.2012 20:00:00	1.22689	0.04	06.08.2012 01:40:00	1.2427	\$ 54.17
171	Buy	27.07.2012 05:00:00	1.22898	0.04	06.08.2012 01:40:00	1.2427	\$ 50.35
172	Sell	13.08.2012 08:00:00	1.22822	0.01	03.10.2012 00:00:00	1.29173	\$ -60.41
174	Sell	30.08.2012 02:00:00	1.25301	0.01	03.10.2012 00:00:00	1.29173	\$ -36.65
173	Sell	13.08.2012 18:00:00	1.23389	0.01	03.10.2012 00:00:00	1.29173	\$ -54.74
175	Sell	30.08.2012 13:00:00	1.2541	0.01	03.10.2012 00:00:00	1.29173	\$ -35.56
176	Buy	03.10.2012 10:00:00	1.29134	0.02	05.10.2012 15:54:00	1.30601	\$ 28.89
177	Buy	03.10.2012 17:00:00	1.29022	0.02	05.10.2012 15:54:00	1.30601	\$ 31.13
178	Sell	24.10.2012 02:00:00	1.29732	0.01	01.11.2012 00:00:00	1.29594	\$ 1.87
180	Sell	24.10.2012 11:00:00	1.29319	0.01	01.11.2012 00:00:00	1.29594	\$ -2.26
179	Sell	24.10.2012 08:00:00	1.29791	0.01	01.11.2012 00:00:00	1.29594	\$ 2.46
181	Sell	24.10.2012 18:00:00	1.2945	0.01	01.11.2012 00:00:00	1.29594	\$ -0.95
182	Buy	01.11.2012 01:00:00	1.29653	0.02	03.12.2012 00:00:00	1.29934	\$ -1.63
184	Buy	01.11.2012 12:00:00	1.29457	0.02	03.12.2012 00:00:00	1.29934	\$ 2.29
183	Buy	01.11.2012 04:00:00	1.29667	0.02	03.12.2012 00:00:00	1.29934	\$ -1.91
185	Buy	01.11.2012 21:00:00	1.29409	0.02	03.12.2012 00:00:00	1.29934	\$ 3.25
186	Sell	03.12.2012 07:00:00	1.30315	0.04	07.12.2012 14:41:00	1.28848	\$ 59.65
187	Sell	03.12.2012 13:00:00	1.30278	0.04	07.12.2012 14:41:00	1.28848	\$ 58.17
188	Sell	03.12.2012 20:00:00	1.30571	0.04	07.12.2012 14:41:00	1.28848	\$ 69.89
189	Sell	10.12.2012 04:00:00	1.29059	0.01	10.01.2013 00:00:00	1.30551	\$ -13.03
191	Sell	10.12.2012 18:00:00	1.29283	0.01	10.01.2013 00:00:00	1.30551	\$ -10.79
190	Sell	10.12.2012 09:00:00	1.28948	0.01	10.01.2013 00:00:00	1.30551	\$ -14.14
192	Sell	26.12.2012 08:00:00	1.31867	0.01	10.01.2013 00:00:00	1.30551	\$ 14.07
193	Buy	10.01.2013 08:00:00	1.30595	0.02	10.01.2013 16:18:00	1.32062	\$ 29.34
194	Sell	21.01.2013 00:00:00	1.33107	0.01	14.02.2013 00:00:00	1.34496	\$ -12.43
196	Sell	21.01.2013 10:00:00	1.33044	0.01	14.02.2013 00:00:00	1.34496	\$ -13.06
195	Sell	21.01.2013 07:00:00	1.33157	0.01	14.02.2013 00:00:00	1.34496	\$ -11.93
197	Sell	21.01.2013 16:00:00	1.33095	0.01	14.02.2013 00:00:00	1.34496	\$ -12.55
198	Buy	14.02.2013 03:00:00	1.34527	0.02	18.04.2013 00:00:00	1.30355	\$ -97.72

200	Buy	14.02.2013 20:00:00	1.33426	0.02	18.04.2013 00:00:00	1.30355	\$ -75.7
199	Buy	14.02.2013 16:00:00	1.33423	0.02	18.04.2013 00:00:00	1.30355	\$ -75.64
201	Buy	08.03.2013 10:00:00	1.30857	0.02	18.04.2013 00:00:00	1.30355	\$ -19.33
202	Sell	18.04.2013 03:00:00	1.30282	0.04	15.05.2013 11:50:00	1.28815	\$ 65.25
203	Sell	18.04.2013 08:00:00	1.30499	0.04	15.05.2013 11:50:00	1.28815	\$ 73.93
204	Sell	18.04.2013 14:00:00	1.30422	0.04	15.05.2013 11:50:00	1.28815	\$ 70.85
205	Sell	18.04.2013 20:00:00	1.30628	0.04	15.05.2013 11:50:00	1.28815	\$ 79.09
206	Buy	22.05.2013 01:00:00	1.29176	0.01	03.06.2013 17:10:00	1.30643	\$ 13.31
207	Buy	22.05.2013 10:00:00	1.29359	0.01	03.06.2013 17:10:00	1.30643	\$ 11.48
208	Buy	22.05.2013 16:00:00	1.29472	0.01	03.06.2013 17:10:00	1.30643	\$ 10.35
209	Sell	20.06.2013 02:00:00	1.32816	0.01	21.06.2013 16:40:00	1.31349	\$ 14.73
210	Sell	20.06.2013 10:00:00	1.32239	0.01	21.06.2013 16:40:00	1.31349	\$ 8.96
211	Sell	20.06.2013 17:00:00	1.31756	0.01	21.06.2013 16:40:00	1.31349	\$ 4.13
212	Sell	20.06.2013 21:00:00	1.31955	0.01	21.06.2013 16:40:00	1.31349	\$ 6.12
213	Buy	11.07.2013 00:00:00	1.30249	0.01	11.07.2013 00:55:00	1.31716	\$ 14.67
214	Buy	11.07.2013 06:00:00	1.31356	0.01	25.07.2013 21:33:00	1.32823	\$ 13.08
215	Buy	11.07.2013 13:00:00	1.30562	0.01	25.07.2013 21:33:00	1.32823	\$ 21.02
216	Buy	11.07.2013 21:00:00	1.30984	0.01	25.07.2013 21:33:00	1.32823	\$ 16.8
217	Sell	02.08.2013 00:00:00	1.32097	0.01	10.09.2013 00:00:00	1.32547	\$ -2.13
219	Sell	02.08.2013 08:00:00	1.32113	0.01	10.09.2013 00:00:00	1.32547	\$ -1.97
218	Sell	02.08.2013 04:00:00	1.31955	0.01	10.09.2013 00:00:00	1.32547	\$ -3.55
220	Sell	02.08.2013 10:00:00	1.32192	0.01	10.09.2013 00:00:00	1.32547	\$ -1.18
221	Buy	10.09.2013 03:00:00	1.32552	0.02	18.09.2013 20:00:00	1.34019	\$ 27.53
222	Buy	10.09.2013 14:00:00	1.32356	0.02	18.09.2013 20:00:00	1.34019	\$ 31.45
223	Buy	10.09.2013 16:00:00	1.32619	0.02	18.09.2013 20:00:00	1.34019	\$ 26.19
224	Buy	10.09.2013 20:00:00	1.32729	0.02	18.09.2013 20:00:00	1.34019	\$ 23.99
225	Sell	27.09.2013 02:00:00	1.34874	0.01	17.10.2013 00:00:00	1.35348	\$ -3.52
227	Sell	27.09.2013 18:00:00	1.35363	0.01	17.10.2013 00:00:00	1.35348	\$ 1.37
226	Sell	27.09.2013 13:00:00	1.35045	0.01	17.10.2013 00:00:00	1.35348	\$ -1.81
228	Sell	09.10.2013 04:00:00	1.35698	0.01	17.10.2013 00:00:00	1.35348	\$ 3.99
229	Buy	17.10.2013 03:00:00	1.35398	0.02	18.10.2013 08:37:00	1.36865	\$ 29.11
230	Buy	17.10.2013 21:00:00	1.36776	0.02	18.10.2013 08:37:00	1.36865	\$ 1.55
231	Sell	31.10.2013 00:00:00	1.37219	0.01	01.11.2013 01:11:00	1.35752	\$ 14.73
232	Sell	31.10.2013 05:00:00	1.3709	0.01	01.11.2013 01:11:00	1.35752	\$ 13.44
233	Sell	31.10.2013 11:00:00	1.36933	0.01	01.11.2013 01:11:00	1.35752	\$ 11.87
234	Buy	14.11.2013 00:00:00	1.34829	0.01	26.11.2013 00:00:00	1.35217	\$ 2.52
236	Buy	14.11.2013 15:00:00	1.34578	0.01	26.11.2013 00:00:00	1.35217	\$ 5.03
235	Buy	14.11.2013 08:00:00	1.34647	0.01	26.11.2013 00:00:00	1.35217	\$ 4.34
237	Sell	26.11.2013 05:00:00	1.35299	0.02	27.12.2013 00:00:00	1.36898	\$ -28.21
239	Sell	05.12.2013 01:00:00	1.35852	0.02	27.12.2013 00:00:00	1.36898	\$ -18.24
238	Sell	26.11.2013 12:00:00	1.35512	0.02	27.12.2013 00:00:00	1.36898	\$ -23.95
240	Sell	05.12.2013 10:00:00	1.36041	0.02	27.12.2013 00:00:00	1.36898	\$ -14.46
241	Buy	27.12.2013 01:00:00	1.36958	0.04	27.12.2013 12:34:00	1.38425	\$ 58.68
242	Buy	13.01.2014 01:00:00	1.36729	0.01	25.02.2014 00:00:00	1.37337	\$ 1.21
244	Buy	13.01.2014 14:00:00	1.36674	0.01	25.02.2014 00:00:00	1.37337	\$ 1.76
243	Buy	13.01.2014 10:00:00	1.36677	0.01	25.02.2014 00:00:00	1.37337	\$ 1.73
245	Buy	13.01.2014 19:00:00	1.36546	0.01	25.02.2014 00:00:00	1.37337	\$ 3.04
246	Sell	25.02.2014 04:00:00	1.37351	0.02	27.03.2014 00:00:00	1.37847	\$ -6.27
248	Sell	25.02.2014 17:00:00	1.37332	0.02	27.03.2014 00:00:00	1.37847	\$ -6.65
247	Sell	25.02.2014 12:00:00	1.37552	0.02	27.03.2014 00:00:00	1.37847	\$ -2.25
249	Sell	04.03.2014 03:00:00	1.37225	0.02	27.03.2014 00:00:00	1.37847	\$ -9.64
250	Buy	27.03.2014 02:00:00	1.37894	0.04	17.04.2014 00:00:00	1.3816	\$ 1.12
252	Buy	27.03.2014 15:00:00	1.37711	0.04	17.04.2014 00:00:00	1.3816	\$ 8.44
251	Buy	27.03.2014 07:00:00	1.37911	0.04	17.04.2014 00:00:00	1.3816	\$ 0.44
253	Buy	03.04.2014 00:00:00	1.37666	0.04	17.04.2014 00:00:00	1.3816	\$ 13.41
254	Sell	17.04.2014 10:00:00	1.38405	0.09	13.05.2014 19:10:00	1.36938	\$ 146.27
255	Sell	17.04.2014 15:00:00	1.38461	0.09	13.05.2014 19:10:00	1.36938	\$ 151.31
256	Sell	09.05.2014 03:00:00	1.38358	0.09	13.05.2014 19:10:00	1.36938	\$ 129.99
257	Sell	09.05.2014 09:00:00	1.38251	0.09	13.05.2014 19:10:00	1.36938	\$ 120.36
258	Buy	04.06.2014 08:00:00	1.36173	0.01	04.07.2014 00:00:00	1.36087	\$ -4.26

260	Buy	04.06.2014 14:00:00	1.36247	0.01	04.07.2014 00:00:00	1.36087	\$ -5.0
259	Buy	04.06.2014 11:00:00	1.36155	0.01	04.07.2014 00:00:00	1.36087	\$ -4.08
261	Buy	18.06.2014 00:00:00	1.35473	0.01	04.07.2014 00:00:00	1.36087	\$ 4.33
262	Sell	04.07.2014 02:00:00	1.36085	0.02	22.07.2014 14:32:00	1.34618	\$ 31.53
263	Sell	04.07.2014 08:00:00	1.36048	0.02	22.07.2014 14:32:00	1.34618	\$ 30.79
264	Sell	04.07.2014 15:00:00	1.35857	0.02	22.07.2014 14:32:00	1.34618	\$ 26.97
265	Buy	05.08.2014 07:00:00	1.34226	0.01	03.10.2014 14:45:00	1.25213	\$ -96.82
266	Buy	05.08.2014 21:00:00	1.33726	0.01	03.10.2014 14:45:00	1.25213	\$ -91.82
267	Buy	12.08.2014 07:00:00	1.33738	0.01	03.10.2014 14:45:00	1.25213	\$ -91.14
268	Buy	12.08.2014 15:00:00	1.33524	0.01	03.10.2014 14:45:00	1.25213	\$ -89.0
269	Buy	07.10.2014 00:00:00	1.26549	0.02	10.10.2014 10:09:00	1.26594	\$ 0.22
270	Buy	07.10.2014 07:00:00	1.26228	0.02	10.10.2014 10:09:00	1.26594	\$ 6.64
271	Buy	07.10.2014 10:00:00	1.2641	0.02	10.10.2014 10:09:00	1.26594	\$ 3.0
272	Buy	07.10.2014 15:00:00	1.26163	0.02	10.10.2014 10:09:00	1.26594	\$ 7.94
273	Buy	12.11.2014 02:00:00	1.24577	0.04	21.11.2014 09:59:00	1.24671	\$ -0.32
274	Buy	12.11.2014 07:00:00	1.248	0.04	21.11.2014 09:59:00	1.24671	\$ -9.24
275	Buy	12.11.2014 13:00:00	1.24603	0.04	21.11.2014 09:59:00	1.24671	\$ -1.36
276	Buy	12.11.2014 23:00:00	1.24388	0.04	21.11.2014 09:59:00	1.24671	\$ 7.24
277	Buy	10.12.2014 01:00:00	1.23787	0.09	16.12.2014 12:00:00	1.25254	\$ 125.91
278	Buy	10.12.2014 06:00:00	1.23821	0.09	16.12.2014 12:00:00	1.25254	\$ 122.85
279	Buy	10.12.2014 12:00:00	1.23919	0.09	16.12.2014 12:00:00	1.25254	\$ 114.03
280	Buy	10.12.2014 16:00:00	1.23941	0.09	16.12.2014 12:00:00	1.25254	\$ 112.05
281	Sell	18.12.2014 00:00:00	1.23405	0.01	23.12.2014 15:36:00	1.21938	\$ 14.97
282	Sell	18.12.2014 08:00:00	1.23438	0.01	23.12.2014 15:36:00	1.21938	\$ 15.3
283	Sell	18.12.2014 15:00:00	1.22951	0.01	23.12.2014 15:36:00	1.21938	\$ 10.43
284	Buy	15.01.2015 01:00:00	1.17901	0.01	20.02.2015 00:00:00	1.13675	\$ -46.34
286	Buy	15.01.2015 10:00:00	1.17778	0.01	20.02.2015 00:00:00	1.13675	\$ -45.11
285	Buy	15.01.2015 06:00:00	1.17814	0.01	20.02.2015 00:00:00	1.13675	\$ -45.47
287	Buy	15.01.2015 21:00:00	1.16167	0.01	20.02.2015 00:00:00	1.13675	\$ -29.0
288	Sell	20.02.2015 07:00:00	1.13628	0.02	26.02.2015 17:09:00	1.12161	\$ 30.07
289	Sell	20.02.2015 23:00:00	1.13761	0.02	26.02.2015 17:09:00	1.12161	\$ 32.73
290	Buy	18.03.2015 03:00:00	1.06068	0.01	18.03.2015 20:16:00	1.07535	\$ 14.67
291	Buy	18.03.2015 10:00:00	1.06135	0.01	18.03.2015 20:16:00	1.07535	\$ 14.0
292	Buy	18.03.2015 17:00:00	1.06102	0.01	18.03.2015 20:16:00	1.07535	\$ 14.33
293	Sell	31.03.2015 05:00:00	1.08277	0.01	09.04.2015 17:36:00	1.0681	\$ 15.22
294	Sell	31.03.2015 17:00:00	1.07375	0.01	09.04.2015 17:36:00	1.0681	\$ 6.2
295	Buy	17.04.2015 03:00:00	1.07589	0.01	27.04.2015 18:12:00	1.09056	\$ 13.54
296	Buy	17.04.2015 19:00:00	1.07811	0.01	27.04.2015 18:12:00	1.09056	\$ 11.32
297	Sell	12.05.2015 02:00:00	1.1148	0.01	25.05.2015 00:22:00	1.10013	\$ 15.46
298	Sell	12.05.2015 15:00:00	1.12354	0.01	25.05.2015 00:22:00	1.10013	\$ 24.2
299	Sell	12.05.2015 21:00:00	1.12223	0.01	25.05.2015 00:22:00	1.10013	\$ 22.89
300	Sell	20.05.2015 01:00:00	1.11448	0.01	25.05.2015 00:22:00	1.10013	\$ 14.65
301	Buy	01.06.2015 07:00:00	1.09507	0.01	02.06.2015 16:06:00	1.10974	\$ 14.56
302	Buy	01.06.2015 15:00:00	1.09329	0.01	02.06.2015 16:06:00	1.10974	\$ 16.34
303	Buy	01.06.2015 21:00:00	1.09232	0.01	02.06.2015 16:06:00	1.10974	\$ 17.31
304	Sell	16.06.2015 01:00:00	1.12807	0.01	26.06.2015 18:00:00	1.1134	\$ 15.28
305	Sell	16.06.2015 09:00:00	1.12789	0.01	26.06.2015 18:00:00	1.1134	\$ 15.1
306	Sell	16.06.2015 12:00:00	1.12554	0.01	26.06.2015 18:00:00	1.1134	\$ 12.75
307	Buy	09.07.2015 04:00:00	1.10652	0.01	10.07.2015 14:07:00	1.12119	\$ 14.56
308	Buy	09.07.2015 15:00:00	1.10601	0.01	10.07.2015 14:07:00	1.12119	\$ 15.07
309	Buy	09.07.2015 23:00:00	1.10247	0.01	10.07.2015 14:07:00	1.12119	\$ 18.61
310	Buy	13.07.2015 03:00:00	1.11299	0.01	13.08.2015 15:43:00	1.10817	\$ -8.33
311	Buy	13.07.2015 07:00:00	1.11336	0.01	13.08.2015 15:43:00	1.10817	\$ -8.7
312	Buy	23.07.2015 00:00:00	1.09247	0.01	13.08.2015 15:43:00	1.10817	\$ 13.32
313	Buy	23.07.2015 11:00:00	1.09865	0.01	13.08.2015 15:43:00	1.10817	\$ 7.14
314	Sell	19.08.2015 01:00:00	1.10267	0.02	04.09.2015 00:00:00	1.11219	\$ -17.09
316	Sell	19.08.2015 17:00:00	1.1039	0.02	04.09.2015 00:00:00	1.11219	\$ -14.63
315	Sell	19.08.2015 12:00:00	1.10531	0.02	04.09.2015 00:00:00	1.11219	\$ -11.81
317	Sell	28.08.2015 00:01:00	1.12428	0.02	04.09.2015 00:00:00	1.11219	\$ 25.03
318	Buy	04.09.2015 03:00:00	1.1125	0.04	10.09.2015 18:19:00	1.12717	\$ 55.96

319	Buy	04.09.2015 08:00:00	1.11318	0.04	10.09.2015 18:19:00	1.12717	\$ 53.24
320	Buy	04.09.2015 15:00:00	1.11478	0.04	10.09.2015 18:19:00	1.12717	\$ 46.84
321	Buy	04.09.2015 20:00:00	1.11446	0.04	10.09.2015 18:19:00	1.12717	\$ 48.12
322	Sell	21.09.2015 00:01:00	1.12823	0.01	22.09.2015 17:42:00	1.11356	\$ 14.73
323	Sell	21.09.2015 09:00:00	1.13066	0.01	22.09.2015 17:42:00	1.11356	\$ 17.16
324	Sell	21.09.2015 13:00:00	1.12844	0.01	22.09.2015 17:42:00	1.11356	\$ 14.94
325	Buy	28.09.2015 00:01:00	1.11923	0.01	09.10.2015 10:49:00	1.1339	\$ 13.42
326	Buy	28.09.2015 03:00:00	1.12	0.01	09.10.2015 10:49:00	1.1339	\$ 12.65
327	Buy	28.09.2015 07:00:00	1.11909	0.01	09.10.2015 10:49:00	1.1339	\$ 13.56
328	Buy	28.09.2015 11:00:00	1.11915	0.01	09.10.2015 10:49:00	1.1339	\$ 13.5
329	Sell	19.10.2015 07:00:00	1.136	0.01	22.10.2015 15:49:00	1.12133	\$ 14.85
330	Sell	19.10.2015 11:00:00	1.13527	0.01	22.10.2015 15:49:00	1.12133	\$ 14.12
331	Sell	19.10.2015 18:00:00	1.13091	0.01	22.10.2015 15:49:00	1.12133	\$ 9.76
332	Buy	02.11.2015 01:00:00	1.10333	0.01	16.12.2015 00:00:00	1.09289	\$ -15.43
334	Buy	02.11.2015 15:00:00	1.10355	0.01	16.12.2015 00:00:00	1.09289	\$ -15.65
333	Buy	02.11.2015 04:00:00	1.10331	0.01	16.12.2015 00:00:00	1.09289	\$ -15.41
335	Buy	16.11.2015 00:00:00	1.07379	0.01	16.12.2015 00:00:00	1.09289	\$ 15.7
336	Sell	16.12.2015 07:00:00	1.09356	0.02	21.12.2015 18:34:00	1.09356	\$ 0.61
337	Sell	16.12.2015 11:00:00	1.09393	0.02	21.12.2015 18:34:00	1.09356	\$ 1.35
338	Sell	31.12.2015 04:00:00	1.09235	0.04	05.01.2016 11:39:00	1.07768	\$ 59.9
339	Sell	31.12.2015 09:00:00	1.09317	0.04	05.01.2016 11:39:00	1.07768	\$ 63.18
340	Sell	31.12.2015 12:00:00	1.09229	0.04	05.01.2016 11:39:00	1.07768	\$ 59.66
341	Sell	31.12.2015 19:00:00	1.08565	0.04	05.01.2016 11:39:00	1.07768	\$ 33.1
342	Buy	08.01.2016 00:00:00	1.09256	0.01	22.01.2016 00:00:00	1.08727	\$ -6.88
344	Buy	08.01.2016 15:00:00	1.0867	0.01	22.01.2016 00:00:00	1.08727	\$ -1.02
343	Buy	08.01.2016 10:00:00	1.08873	0.01	22.01.2016 00:00:00	1.08727	\$ -3.05
345	Buy	08.01.2016 17:00:00	1.0865	0.01	22.01.2016 00:00:00	1.08727	\$ -0.82
346	Sell	22.01.2016 10:00:00	1.08306	0.02	27.01.2016 00:00:00	1.08698	\$ -7.23
348	Sell	22.01.2016 21:00:00	1.0797	0.02	27.01.2016 00:00:00	1.08698	\$ -13.95
347	Sell	22.01.2016 14:00:00	1.08309	0.02	27.01.2016 00:00:00	1.08698	\$ -7.17
349	Buy	27.01.2016 06:00:00	1.08689	0.04	03.02.2016 00:00:00	1.09158	\$ 15.59
351	Buy	27.01.2016 13:00:00	1.08705	0.04	03.02.2016 00:00:00	1.09158	\$ 14.95
350	Buy	27.01.2016 10:00:00	1.08711	0.04	03.02.2016 00:00:00	1.09158	\$ 14.71
352	Buy	27.01.2016 21:00:00	1.08737	0.04	03.02.2016 00:00:00	1.09158	\$ 13.67
353	Sell	03.02.2016 06:00:00	1.09124	0.09	03.03.2016 18:36:00	1.09584	\$ -25.51
354	Sell	03.02.2016 10:00:00	1.09068	0.09	03.03.2016 18:36:00	1.09584	\$ -30.55
355	Sell	16.02.2016 06:00:00	1.11508	0.09	03.03.2016 18:36:00	1.09584	\$ 181.92
356	Sell	16.02.2016 14:00:00	1.1157	0.09	03.03.2016 18:36:00	1.09584	\$ 187.5
357	Buy	07.03.2016 09:00:00	1.09918	0.21	10.03.2016 17:30:00	1.11385	\$ 300.93
358	Buy	07.03.2016 15:00:00	1.09502	0.21	10.03.2016 17:30:00	1.11385	\$ 388.29
359	Sell	24.03.2016 04:00:00	1.11698	0.01	20.04.2016 00:00:00	1.13579	\$ -17.17
361	Sell	24.03.2016 14:00:00	1.11514	0.01	20.04.2016 00:00:00	1.13579	\$ -19.01
360	Sell	24.03.2016 10:00:00	1.11605	0.01	20.04.2016 00:00:00	1.13579	\$ -18.1
362	Sell	11.04.2016 00:00:00	1.14138	0.01	20.04.2016 00:00:00	1.13579	\$ 6.14
363	Buy	20.04.2016 04:00:00	1.13586	0.02	02.05.2016 16:57:00	1.15053	\$ 26.62
364	Buy	20.04.2016 10:00:00	1.1362	0.02	02.05.2016 16:57:00	1.15053	\$ 25.94
365	Buy	20.04.2016 13:00:00	1.13725	0.02	02.05.2016 16:57:00	1.15053	\$ 23.84
366	Buy	27.04.2016 00:00:00	1.12961	0.02	02.05.2016 16:57:00	1.15053	\$ 40.71
367	Sell	09.05.2016 04:00:00	1.13832	0.01	18.05.2016 21:10:00	1.12365	\$ 15.22
368	Sell	09.05.2016 12:00:00	1.13936	0.01	18.05.2016 21:10:00	1.12365	\$ 16.26
369	Sell	09.05.2016 21:00:00	1.13828	0.01	18.05.2016 21:10:00	1.12365	\$ 15.18
370	Buy	02.06.2016 00:00:00	1.11878	0.01	03.06.2016 17:00:00	1.13345	\$ 14.56
371	Buy	02.06.2016 04:00:00	1.11947	0.01	03.06.2016 17:00:00	1.13345	\$ 13.87
372	Buy	02.06.2016 11:00:00	1.12139	0.01	03.06.2016 17:00:00	1.13345	\$ 11.95
373	Buy	02.06.2016 16:00:00	1.11898	0.01	03.06.2016 17:00:00	1.13345	\$ 14.36
374	Sell	13.06.2016 16:00:00	1.12508	0.01	20.06.2016 00:00:00	1.13321	\$ -7.7
375	Buy	20.06.2016 16:00:00	1.13434	0.02	05.08.2016 00:00:00	1.11252	\$ -54.06
377	Buy	04.07.2016 09:00:00	1.11368	0.02	05.08.2016 00:00:00	1.11252	\$ -9.57
376	Buy	04.07.2016 00:02:00	1.11258	0.02	05.08.2016 00:00:00	1.11252	\$ -7.37
378	Buy	04.07.2016 14:00:00	1.11237	0.02	05.08.2016 00:00:00	1.11252	\$ -6.95



379	Sell	05.08.2016 02:00:00	1.1128	0.04	06.09.2016 00:00:00	1.11469	\$ 0.23
381	Sell	05.08.2016 23:00:00	1.10871	0.04	06.09.2016 00:00:00	1.11469	\$ -16.13
380	Sell	05.08.2016 17:00:00	1.10499	0.04	06.09.2016 00:00:00	1.11469	\$ -31.01
382	Sell	25.08.2016 02:00:00	1.12641	0.04	06.09.2016 00:00:00	1.11469	\$ 49.8
383	Buy	06.09.2016 02:00:00	1.1149	0.09	08.09.2016 13:28:00	1.12957	\$ 129.99
384	Buy	06.09.2016 05:00:00	1.11461	0.09	08.09.2016 13:28:00	1.12957	\$ 132.6
385	Buy	06.09.2016 10:00:00	1.11538	0.09	08.09.2016 13:28:00	1.12957	\$ 125.67
386	Buy	06.09.2016 18:00:00	1.12394	0.09	08.09.2016 13:28:00	1.12957	\$ 48.63
387	Sell	14.09.2016 00:00:00	1.1218	0.01	23.09.2016 00:00:00	1.12081	\$ 1.54
389	Sell	14.09.2016 12:00:00	1.12239	0.01	23.09.2016 00:00:00	1.12081	\$ 2.13
388	Sell	14.09.2016 05:00:00	1.12168	0.01	23.09.2016 00:00:00	1.12081	\$ 1.42
390	Buy	23.09.2016 01:00:00	1.12083	0.02	30.09.2016 00:00:00	1.12212	\$ 0.99
392	Buy	23.09.2016 14:00:00	1.12244	0.02	30.09.2016 00:00:00	1.12212	\$ -2.23
391	Buy	23.09.2016 09:00:00	1.11991	0.02	30.09.2016 00:00:00	1.12212	\$ 2.83
393	Buy	23.09.2016 19:00:00	1.12239	0.02	30.09.2016 00:00:00	1.12212	\$ -2.13
394	Sell	30.09.2016 04:00:00	1.12052	0.04	11.10.2016 17:59:00	1.10585	\$ 61.36
395	Sell	30.09.2016 11:00:00	1.11855	0.04	11.10.2016 17:59:00	1.10585	\$ 53.48
396	Buy	31.10.2016 08:00:00	1.097	0.01	02.11.2016 17:59:00	1.11167	\$ 14.44
397	Buy	31.10.2016 18:00:00	1.09627	0.01	02.11.2016 17:59:00	1.11167	\$ 15.17
398	Sell	09.11.2016 01:00:00	1.10122	0.01	11.11.2016 12:00:00	1.08655	\$ 14.79
399	Sell	09.11.2016 04:00:00	1.10403	0.01	11.11.2016 12:00:00	1.08655	\$ 17.6
400	Sell	09.11.2016 10:00:00	1.11173	0.01	11.11.2016 12:00:00	1.08655	\$ 25.3
401	Sell	09.11.2016 15:00:00	1.10263	0.01	11.11.2016 12:00:00	1.08655	\$ 16.2
402	Buy	30.11.2016 00:00:00	1.06485	0.01	05.12.2016 20:08:00	1.07952	\$ 14.1
403	Buy	30.11.2016 09:00:00	1.06325	0.01	05.12.2016 20:08:00	1.07952	\$ 15.7
404	Buy	30.11.2016 11:00:00	1.0657	0.01	05.12.2016 20:08:00	1.07952	\$ 13.25
405	Buy	30.11.2016 22:00:00	1.05985	0.01	05.12.2016 20:08:00	1.07952	\$ 19.1
406	Buy	26.12.2016 14:00:00	1.04502	0.01	30.12.2016 01:39:00	1.05969	\$ 14.22
407	Buy	26.12.2016 21:00:00	1.04523	0.01	30.12.2016 01:39:00	1.05969	\$ 14.01
408	Sell	20.01.2017 02:00:00	1.0659	0.01	16.02.2017 15:15:00	1.06543	\$ 2.11
409	Sell	20.01.2017 08:00:00	1.0672	0.01	16.02.2017 15:15:00	1.06543	\$ 3.41
410	Sell	20.01.2017 11:00:00	1.06629	0.01	16.02.2017 15:15:00	1.06543	\$ 2.5
411	Sell	30.01.2017 07:00:00	1.07291	0.01	16.02.2017 15:15:00	1.06543	\$ 8.51
412	Buy	17.02.2017 00:00:00	1.06738	0.02	22.03.2017 16:54:00	1.08205	\$ 21.86
413	Buy	17.02.2017 03:00:00	1.0669	0.02	22.03.2017 16:54:00	1.08205	\$ 22.82
414	Buy	17.02.2017 15:00:00	1.0648	0.02	22.03.2017 16:54:00	1.08205	\$ 27.02
415	Buy	28.02.2017 05:00:00	1.05865	0.02	22.03.2017 16:54:00	1.08205	\$ 41.81
416	Sell	30.03.2017 03:00:00	1.07579	0.01	07.04.2017 19:28:00	1.06112	\$ 15.16
417	Sell	30.03.2017 11:00:00	1.07365	0.01	07.04.2017 19:28:00	1.06112	\$ 13.02
418	Sell	30.03.2017 16:00:00	1.07213	0.01	07.04.2017 19:28:00	1.06112	\$ 11.5
419	Sell	30.03.2017 20:00:00	1.07034	0.01	07.04.2017 19:28:00	1.06112	\$ 9.71
420	Buy	13.04.2017 00:00:00	1.06652	0.01	24.04.2017 00:02:00	1.08119	\$ 13.42
421	Buy	13.04.2017 06:00:00	1.06741	0.01	24.04.2017 00:02:00	1.08119	\$ 12.53
422	Buy	13.04.2017 10:00:00	1.06531	0.01	24.04.2017 00:02:00	1.08119	\$ 14.63
423	Sell	03.05.2017 07:00:00	1.0929	0.01	19.06.2017 00:03:00	1.1205	\$ -24.74
425	Sell	03.05.2017 18:00:00	1.09077	0.01	19.06.2017 00:03:00	1.1205	\$ -26.87
424	Sell	03.05.2017 10:00:00	1.09213	0.01	19.06.2017 00:03:00	1.1205	\$ -25.51
426	Sell	03.05.2017 23:00:00	1.08949	0.01	19.06.2017 00:03:00	1.1205	\$ -28.15
427	Buy	19.06.2017 10:00:00	1.12055	0.02	28.06.2017 04:57:00	1.13522	\$ 27.3
428	Buy	19.06.2017 14:00:00	1.12074	0.02	28.06.2017 04:57:00	1.13522	\$ 26.92
429	Buy	26.06.2017 02:00:00	1.11974	0.02	28.06.2017 04:57:00	1.13522	\$ 30.51
430	Buy	26.06.2017 07:00:00	1.11975	0.02	28.06.2017 04:57:00	1.13522	\$ 30.49
431	Sell	06.07.2017 04:00:00	1.13413	0.01	04.10.2017 00:00:00	1.17447	\$ -34.86
433	Sell	14.07.2017 04:00:00	1.14014	0.01	04.10.2017 00:00:00	1.17447	\$ -29.34
432	Sell	14.07.2017 00:00:00	1.13958	0.01	04.10.2017 00:00:00	1.17447	\$ -29.9
434	Sell	14.07.2017 13:00:00	1.14144	0.01	04.10.2017 00:00:00	1.17447	\$ -28.04
435	Buy	04.10.2017 03:00:00	1.1749	0.02	22.11.2017 00:00:00	1.17378	\$ -13.34
437	Buy	04.10.2017 14:00:00	1.17754	0.02	22.11.2017 00:00:00	1.17378	\$ -18.62
436	Buy	04.10.2017 09:00:00	1.1772	0.02	22.11.2017 00:00:00	1.17378	\$ -17.94
438	Buy	04.10.2017 20:00:00	1.1764	0.02	22.11.2017 00:00:00	1.17378	\$ -16.34

439	Sell	22.11.2017 05:00:00	1.17366	0.04	14.12.2017 00:00:00	1.1827	\$ -30.8
441	Sell	30.11.2017 00:00:00	1.18468	0.04	14.12.2017 00:00:00	1.1827	\$ 11.33
440	Sell	22.11.2017 13:00:00	1.175	0.04	14.12.2017 00:00:00	1.1827	\$ -25.44
442	Sell	30.11.2017 08:00:00	1.18644	0.04	14.12.2017 00:00:00	1.1827	\$ 18.37
443	Buy	14.12.2017 11:00:00	1.18272	0.09	29.12.2017 11:07:00	1.19739	\$ 116.73
444	Buy	14.12.2017 14:00:00	1.18265	0.09	29.12.2017 11:07:00	1.19739	\$ 117.36
445	Buy	14.12.2017 21:00:00	1.17984	0.09	29.12.2017 11:07:00	1.19739	\$ 142.65
446	Sell	09.01.2018 07:00:00	1.19681	0.01	14.02.2018 00:00:00	1.2351	\$ -36.1
448	Sell	23.01.2018 05:00:00	1.22612	0.01	14.02.2018 00:00:00	1.2351	\$ -7.64
447	Sell	23.01.2018 02:00:00	1.22562	0.01	14.02.2018 00:00:00	1.2351	\$ -8.14
449	Sell	23.01.2018 08:00:00	1.2258	0.01	14.02.2018 00:00:00	1.2351	\$ -7.96
450	Buy	14.02.2018 03:00:00	1.23535	0.02	15.02.2018 09:38:00	1.25002	\$ 29.11
451	Buy	14.02.2018 11:00:00	1.23674	0.02	15.02.2018 09:38:00	1.25002	\$ 26.33
452	Buy	14.02.2018 18:00:00	1.24041	0.02	15.02.2018 09:38:00	1.25002	\$ 18.99
453	Buy	05.03.2018 01:00:00	1.23475	0.01	28.03.2018 16:46:00	1.23443	\$ -2.93
454	Buy	05.03.2018 11:00:00	1.23255	0.01	28.03.2018 16:46:00	1.23443	\$ -0.73
455	Buy	05.03.2018 17:00:00	1.23244	0.01	28.03.2018 16:46:00	1.23443	\$ -0.62
456	Buy	22.03.2018 07:00:00	1.23616	0.01	28.03.2018 16:46:00	1.23443	\$ -2.41
457	Buy	10.04.2018 00:00:00	1.23197	0.02	18.04.2018 00:00:00	1.23689	\$ 8.03
459	Buy	10.04.2018 10:00:00	1.23169	0.02	18.04.2018 00:00:00	1.23689	\$ 8.59
458	Buy	10.04.2018 08:00:00	1.23197	0.02	18.04.2018 00:00:00	1.23689	\$ 8.03
460	Buy	10.04.2018 22:00:00	1.2362	0.02	18.04.2018 00:00:00	1.23689	\$ -0.43
461	Sell	18.04.2018 05:00:00	1.23714	0.04	23.04.2018 16:52:00	1.22247	\$ 59.9
462	Sell	18.04.2018 09:00:00	1.23767	0.04	23.04.2018 16:52:00	1.22247	\$ 62.02
463	Sell	18.04.2018 18:00:00	1.23762	0.04	23.04.2018 16:52:00	1.22247	\$ 61.82
464	Sell	18.04.2018 23:00:00	1.23749	0.04	23.04.2018 16:52:00	1.22247	\$ 61.3
465	Buy	14.05.2018 03:00:00	1.19539	0.01	14.06.2018 00:00:00	1.17908	\$ -19.82
467	Buy	01.06.2018 00:00:00	1.16892	0.01	14.06.2018 00:00:00	1.17908	\$ 8.69
466	Buy	14.05.2018 10:00:00	1.19564	0.01	14.06.2018 00:00:00	1.17908	\$ -20.07
468	Buy	01.06.2018 06:00:00	1.16861	0.01	14.06.2018 00:00:00	1.17908	\$ 9.0
469	Sell	14.06.2018 05:00:00	1.17976	0.02	14.06.2018 17:07:00	1.16509	\$ 29.34
470	Sell	14.06.2018 16:00:00	1.16884	0.02	14.06.2018 17:07:00	1.16509	\$ 7.5
471	Buy	25.06.2018 01:00:00	1.16658	0.01	13.07.2018 00:00:00	1.16698	\$ -1.64
473	Buy	25.06.2018 12:00:00	1.16602	0.01	13.07.2018 00:00:00	1.16698	\$ -1.08
472	Buy	25.06.2018 09:00:00	1.1643	0.01	13.07.2018 00:00:00	1.16698	\$ 0.64
474	Buy	25.06.2018 19:00:00	1.16943	0.01	13.07.2018 00:00:00	1.16698	\$ -4.49
475	Sell	13.07.2018 07:00:00	1.16616	0.02	10.08.2018 00:00:00	1.15275	\$ 30.23
476	Buy	10.08.2018 04:00:00	1.15352	0.04	27.08.2018 19:24:00	1.16819	\$ 50.97
477	Buy	10.08.2018 13:00:00	1.14615	0.04	27.08.2018 19:24:00	1.16819	\$ 80.45
478	Buy	10.08.2018 23:00:00	1.14025	0.04	27.08.2018 19:24:00	1.16819	\$ 104.05
479	Buy	21.08.2018 12:00:00	1.15347	0.04	27.08.2018 19:24:00	1.16819	\$ 56.16
480	Sell	04.09.2018 00:00:00	1.16169	0.01	03.10.2018 23:50:00	1.14702	\$ 16.44
481	Sell	04.09.2018 04:00:00	1.16031	0.01	03.10.2018 23:50:00	1.14702	\$ 15.06
482	Sell	04.09.2018 10:00:00	1.15776	0.01	03.10.2018 23:50:00	1.14702	\$ 12.51
483	Sell	04.09.2018 17:00:00	1.15418	0.01	03.10.2018 23:50:00	1.14702	\$ 8.93
484	Buy	10.10.2018 00:00:00	1.14912	0.01	23.11.2018 00:00:00	1.14003	\$ -14.08
486	Buy	10.10.2018 14:00:00	1.15037	0.01	23.11.2018 00:00:00	1.14003	\$ -15.33
485	Buy	10.10.2018 02:00:00	1.14963	0.01	23.11.2018 00:00:00	1.14003	\$ -14.59
487	Buy	02.11.2018 06:00:00	1.14012	0.01	23.11.2018 00:00:00	1.14003	\$ -2.47
488	Sell	23.11.2018 12:00:00	1.13739	0.02	28.01.2019 00:02:00	1.14019	\$ 2.43
490	Sell	27.12.2018 00:00:00	1.13536	0.02	28.01.2019 00:02:00	1.14019	\$ -5.76
489	Sell	23.11.2018 19:00:00	1.13321	0.02	28.01.2019 00:02:00	1.14019	\$ -5.93
491	Sell	27.12.2018 08:00:00	1.13826	0.02	28.01.2019 00:02:00	1.14019	\$ 0.04
492	Buy	28.01.2019 03:00:00	1.14124	0.04	05.02.2019 00:00:00	1.14351	\$ 5.45
494	Buy	28.01.2019 13:00:00	1.14151	0.04	05.02.2019 00:00:00	1.14351	\$ 4.37
493	Buy	28.01.2019 06:00:00	1.14204	0.04	05.02.2019 00:00:00	1.14351	\$ 2.25
495	Buy	28.01.2019 16:00:00	1.14179	0.04	05.02.2019 00:00:00	1.14351	\$ 3.25
496	Sell	05.02.2019 03:00:00	1.14354	0.09	11.02.2019 16:19:00	1.12887	\$ 135.32
497	Sell	05.02.2019 06:00:00	1.14325	0.09	11.02.2019 16:19:00	1.12887	\$ 132.71
498	Sell	05.02.2019 18:00:00	1.14065	0.09	11.02.2019 16:19:00	1.12887	\$ 109.31

499	Sell	05.02.2019 23:00:00	1.14122	0.09	11.02.2019 16:19:00	1.12887	\$ 114.44
500	Buy	18.02.2019 03:00:00	1.13038	0.01	05.03.2019 00:00:00	1.13393	\$ 1.85
502	Buy	18.02.2019 12:00:00	1.13164	0.01	05.03.2019 00:00:00	1.13393	\$ 0.59
501	Buy	18.02.2019 10:00:00	1.13082	0.01	05.03.2019 00:00:00	1.13393	\$ 1.41
503	Buy	18.02.2019 23:00:00	1.13152	0.01	05.03.2019 00:00:00	1.13393	\$ 0.71
504	Sell	05.03.2019 03:00:00	1.13338	0.02	07.03.2019 21:39:00	1.11871	\$ 29.58
505	Sell	05.03.2019 07:00:00	1.13303	0.02	07.03.2019 21:39:00	1.11871	\$ 28.88
506	Sell	05.03.2019 17:00:00	1.13206	0.02	07.03.2019 21:39:00	1.11871	\$ 26.94
507	Buy	13.03.2019 08:00:00	1.12874	0.01	20.03.2019 20:33:00	1.14341	\$ 13.88
508	Buy	13.03.2019 21:00:00	1.13303	0.01	20.03.2019 20:33:00	1.14341	\$ 9.59
509	Sell	25.03.2019 03:00:00	1.12897	0.01	05.04.2019 00:00:00	1.12213	\$ 7.51
511	Sell	25.03.2019 14:00:00	1.13088	0.01	05.04.2019 00:00:00	1.12213	\$ 9.42
510	Sell	25.03.2019 11:00:00	1.13077	0.01	05.04.2019 00:00:00	1.12213	\$ 9.31
512	Sell	25.03.2019 19:00:00	1.13112	0.01	05.04.2019 00:00:00	1.12213	\$ 9.66
513	Buy	05.04.2019 03:00:00	1.12232	0.02	19.04.2019 00:00:00	1.12306	\$ -1.69
515	Buy	05.04.2019 23:00:00	1.12188	0.02	19.04.2019 00:00:00	1.12306	\$ -0.81
514	Buy	05.04.2019 16:00:00	1.1237	0.02	19.04.2019 00:00:00	1.12306	\$ -4.45
516	Sell	19.04.2019 01:00:00	1.1231	0.04	01.05.2019 00:00:00	1.12161	\$ 8.88
518	Sell	19.04.2019 16:00:00	1.12437	0.04	01.05.2019 00:00:00	1.12161	\$ 13.96
517	Sell	19.04.2019 07:00:00	1.12362	0.04	01.05.2019 00:00:00	1.12161	\$ 10.96
519	Sell	19.04.2019 20:00:00	1.12444	0.04	01.05.2019 00:00:00	1.12161	\$ 14.24
522	Buy	01.05.2019 18:00:00	1.12412	0.09	03.05.2019 23:58:00	1.12015	\$ -37.77
521	Buy	01.05.2019 07:00:00	1.12196	0.09	03.05.2019 23:58:00	1.12015	\$ -18.33
520	Buy	01.05.2019 04:00:00	1.12194	0.09	03.05.2019 23:58:00	1.12015	\$ -18.15

Report generated by Quant Analyzer