

QUANT ANALYZER REPORT

LT-Trender 2009.05.03 - 2019.05.04

Source: MT4Report

Symbol: EURUSD Period: H1 : 04.05.2009 - 03.05.2019
 Initial deposit: 1000.0
 Parameters: -

TOTAL PROFIT

\$ 9451.4

PROFIT IN PIPS: 19093.3 PIPS
 YRLY AVG PROFIT: \$ 946.63
 YRLY AVG % RET: 94.66 %
 CAGR: 23.78 %

# OF TRADES	381	SHARPE RATIO	0.25	PROFIT FACTOR	3.28	RETURN / DD RATIO	16.57	WINNING %	73.49 %
DRAWDOWN	\$ 570.55	% DRAWDOWN	16.94 %	DAILY AVG PROFIT	\$ 2.59	MTHLY AVG PROFIT	\$ 78.76	AVERAGE TRADE	\$ 46.56
ANNUAL% / MAX DD%	1.4	R EXPECTANCY	0.6 R	R EXP SCORE	23.07 R	SQN	4.38	SQN SCORE	1.02

generated by Quant Analyzer



MONTHLY PERFORMANCE (\$)

Year	Jan	Feb	Mar	Apr	May	Jun	Jul	Aug	Sep	Oct	Nov	Dec	YTD
2019	0	0	0	0	37.18	0	0	0	0	0	0	0	37.18
2018	385.39	0	0	0	-179.7	0	0	242.46	0	0	35.04	0	483.19
2017	0	0	-106.63	0	239.34	-1.2	78.59	148.07	13.43	0	0	-93.03	278.57
2016	0	-285.99	510.78	21.16	41.67	0	-106.26	0	0	-209.48	758.74	46.14	776.76
2015	295.59	0	176.38	0	0	-95.16	0	429.53	0	0	-176.71	0	629.63
2014	0	0	-16.88	0	-28.37	-239.75	0	0	3106.08	92.45	38.58	13	2965.11
2013	17.66	69.08	0	-132.07	58.13	0	133.9	33.61	0	71.87	0	-5.46	246.72
2012	38.48	0	0	-97.87	-472.68	337.6	556.72	4.65	-87.57	175.09	0	189.94	644.36
2011	-26.63	0	-61.54	882.66	39.67	0	159.94	13.26	143.89	-34.45	458.04	89.4	1664.24
2010	-155.13	635.68	45.31	14.19	258.47	71.32	-60.31	281.48	93.15	115.37	-181.72	215.35	1333.16
2009	0	0	0	0	210.96	17.33	0	35.41	76.7	16.82	35.26	0	392.48

STATS

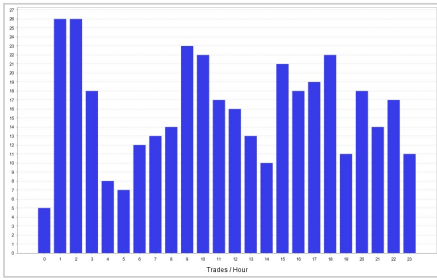
Strategy

Wins/Losses Ratio	2.77	Payout Ratio (Avg Win/Loss)	1.18	Average # of Bars in Trade	0
AHPR	0.65	Z-Score	-8.29	Z-Probability	0 %
Expectancy	24.81	Deviation	\$ 112.73	Exposure	-99999999 %
Stagnation in Days	341	Stagnation in %	9.34 %		

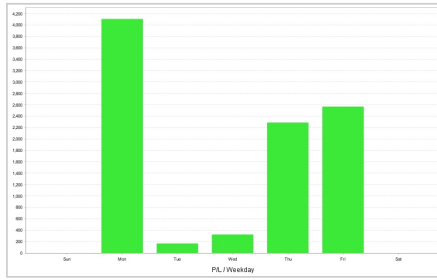
Trades

# of Wins	280	# of Losses	101	# of Cancelled/Expired	0
Gross Profit	\$ 13595.91	Gross Loss	\$ -4144.51	Average Win	\$ 48.56
Largest Win	\$ 1044.85	Largest Loss	\$ -250.89	Average Loss	\$ -41.03
		Max Consec Wins	26	Max Consec Losses	10

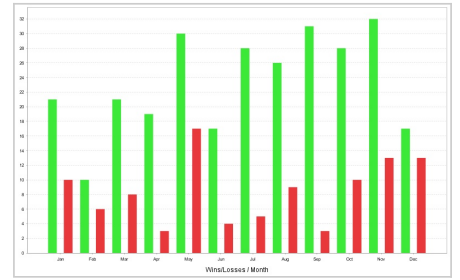
CHARTS



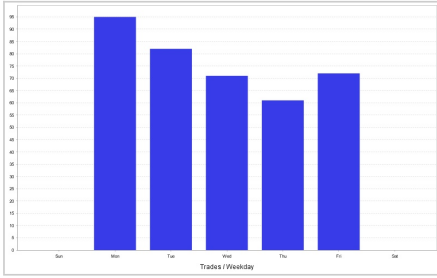
Trades by hour



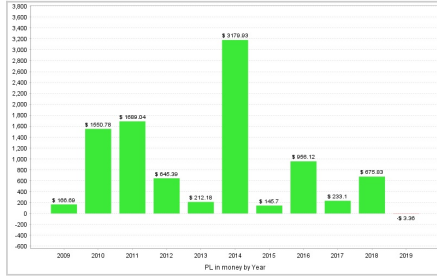
P/L by weekday



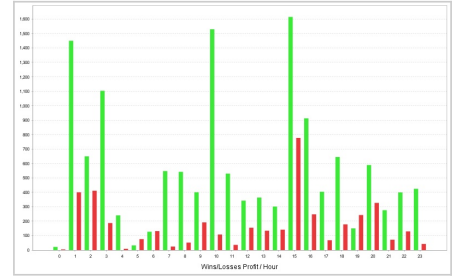
Wins/Losses by month



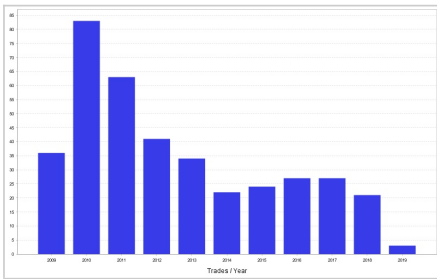
Trades by weekday



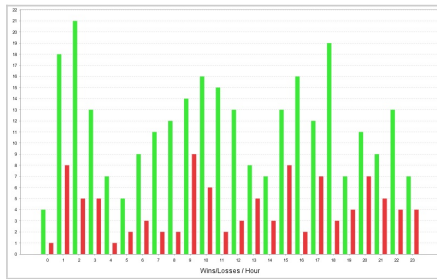
P/L by year



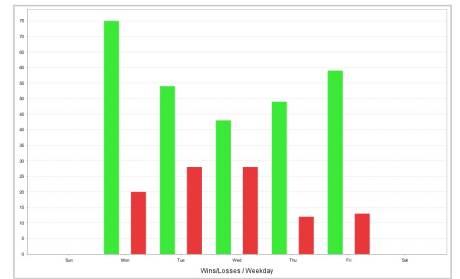
Wins/Losses Profit by hour



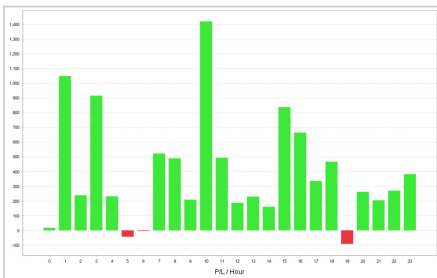
Trades by year



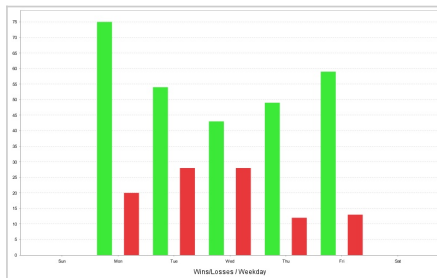
Wins/Losses by hour



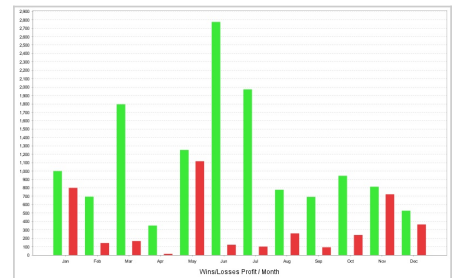
Wins/Losses by weekday



P/L by hour



Wins/Losses by weekday



Wins/Losses Profit by month

TRADES

Ticket	Type	Open time	Open price	Size	Close time	Close price	Profit/Loss	Comment
1	Sell	04.05.2009 07:00:00	1.33219	0.01	18.05.2009 00:00:00	1.34849	\$ -15.45	
3	Sell	06.05.2009 17:00:00	1.32997	0.01	18.05.2009 00:00:00	1.34849	\$ -17.79	
2	Sell	06.05.2009 14:00:00	1.33163	0.01	18.05.2009 00:00:00	1.34849	\$ -16.13	
4	Buy	18.05.2009 07:00:00	1.34489	0.02	26.05.2009 10:07:00	1.39178	\$ 91.97	
5	Buy	18.05.2009 12:00:00	1.34723	0.02	26.05.2009 10:07:00	1.39178	\$ 87.29	
6	Buy	18.05.2009 18:00:00	1.35034	0.02	26.05.2009 10:07:00	1.39178	\$ 81.07	
7	Buy	26.05.2009 14:00:00	1.38979	0.01	02.06.2009 08:37:00	1.41133	\$ 20.75	
8	Buy	26.05.2009 21:00:00	1.39851	0.01	02.06.2009 08:37:00	1.41133	\$ 12.03	
9	Buy	27.05.2009 01:00:00	1.39915	0.01	02.06.2009 08:37:00	1.41133	\$ 11.5	
10	Buy	02.06.2009 12:00:00	1.41636	0.01	03.06.2009 14:52:00	1.41677	\$ 0.3	
11	Buy	02.06.2009 17:00:00	1.42997	0.01	03.06.2009 14:52:00	1.41677	\$ -13.31	
12	Buy	03.06.2009 06:00:00	1.43071	0.01	03.06.2009 14:52:00	1.41677	\$ -13.94	
13	Buy	03.06.2009 23:00:00	1.41634	0.02	07.08.2009 14:39:00	1.43145	\$ 15.49	
14	Buy	04.06.2009 03:00:00	1.41684	0.02	07.08.2009 14:39:00	1.43145	\$ 14.72	
15	Buy	04.06.2009 09:00:00	1.4216	0.02	07.08.2009 14:39:00	1.43145	\$ 5.2	
16	Buy	07.08.2009 15:00:00	1.43221	0.01	21.09.2009 14:19:00	1.46332	\$ 26.01	
17	Buy	21.08.2009 22:00:00	1.43366	0.01	21.09.2009 14:19:00	1.46332	\$ 26.15	
18	Buy	28.08.2009 08:00:00	1.43606	0.01	21.09.2009 14:19:00	1.46332	\$ 24.54	

19	Buy	21.09.2009 18:00:00	1.46916	0.01	19.10.2009 02:35:00	1.48336	\$ 11.03
20	Buy	22.09.2009 09:00:00	1.47404	0.01	19.10.2009 02:35:00	1.48336	\$ 6.26
21	Buy	22.09.2009 16:00:00	1.4786	0.01	19.10.2009 02:35:00	1.48336	\$ 1.7
22	Buy	19.10.2009 06:00:00	1.488	0.01	26.10.2009 17:02:00	1.49297	\$ 4.18
23	Buy	19.10.2009 17:00:00	1.49438	0.01	26.10.2009 17:02:00	1.49297	\$ -2.2
24	Buy	19.10.2009 23:00:00	1.49633	0.01	26.10.2009 17:02:00	1.49297	\$ -4.15
25	Buy	26.10.2009 22:00:00	1.48767	0.02	12.11.2009 13:30:00	1.49155	\$ 3.91
26	Buy	27.10.2009 05:00:00	1.4882	0.02	12.11.2009 13:30:00	1.49155	\$ 3.07
27	Buy	06.11.2009 10:00:00	1.48968	0.02	12.11.2009 13:30:00	1.49155	\$ 2.38
28	Buy	13.11.2009 01:00:00	1.48573	0.01	17.11.2009 13:08:00	1.48827	\$ 2.09
29	Buy	13.11.2009 14:24:00	1.48757	0.01	17.11.2009 13:08:00	1.48827	\$ 0.25
30	Buy	13.11.2009 18:00:00	1.48855	0.01	17.11.2009 13:08:00	1.48827	\$ -0.73
31	Buy	17.11.2009 20:00:00	1.48573	0.01	26.11.2009 16:46:00	1.50117	\$ 14.42
32	Buy	18.11.2009 16:00:00	1.49467	0.01	26.11.2009 16:46:00	1.50117	\$ 5.59
33	Buy	18.11.2009 22:00:00	1.49598	0.01	26.11.2009 16:46:00	1.50117	\$ 4.28
34	Buy	26.11.2009 20:00:00	1.50097	0.01	18.01.2010 00:00:00	1.4348	\$ -72.18
36	Buy	02.12.2009 01:00:00	1.509	0.01	18.01.2010 00:00:00	1.4348	\$ -79.53
35	Buy	30.11.2009 13:00:00	1.50333	0.01	18.01.2010 00:00:00	1.4348	\$ -74.08
37	Sell	18.01.2010 01:00:00	1.43687	0.02	22.01.2010 10:48:00	1.41618	\$ 41.87
38	Sell	19.01.2010 23:00:00	1.42872	0.02	22.01.2010 10:48:00	1.41618	\$ 25.45
39	Sell	20.01.2010 12:00:00	1.41773	0.02	22.01.2010 10:48:00	1.41618	\$ 3.34
40	Sell	22.01.2010 13:00:00	1.41109	0.04	03.02.2010 08:33:00	1.39854	\$ 53.12
41	Sell	26.01.2010 13:00:00	1.40802	0.04	03.02.2010 08:33:00	1.39854	\$ 39.87
42	Sell	26.01.2010 22:00:00	1.40789	0.04	03.02.2010 08:33:00	1.39854	\$ 39.35
43	Sell	03.02.2010 13:00:00	1.40064	0.08	09.02.2010 06:38:00	1.37187	\$ 233.08
44	Sell	04.02.2010 03:00:00	1.38821	0.08	09.02.2010 06:38:00	1.37187	\$ 133.15
45	Sell	04.02.2010 08:00:00	1.38759	0.08	09.02.2010 06:38:00	1.37187	\$ 128.19
46	Sell	09.02.2010 13:00:00	1.3712	0.01	16.02.2010 08:32:00	1.36644	\$ 5.19
47	Sell	12.02.2010 01:00:00	1.36871	0.01	16.02.2010 08:32:00	1.36644	\$ 2.51
48	Sell	12.02.2010 09:00:00	1.3637	0.01	16.02.2010 08:32:00	1.36644	\$ -2.5
49	Sell	16.02.2010 11:00:00	1.36558	0.01	19.02.2010 19:09:00	1.35766	\$ 8.1
50	Sell	18.02.2010 03:00:00	1.35651	0.01	19.02.2010 19:09:00	1.35766	\$ -1.09
51	Sell	18.02.2010 09:00:00	1.35431	0.01	19.02.2010 19:09:00	1.35766	\$ -3.29
52	Sell	22.02.2010 07:00:00	1.36283	0.01	02.03.2010 13:30:00	1.35682	\$ 6.5
53	Sell	22.02.2010 17:00:00	1.35906	0.01	02.03.2010 13:30:00	1.35682	\$ 2.73
54	Sell	23.02.2010 19:00:00	1.352	0.01	02.03.2010 13:30:00	1.35682	\$ -4.39
55	Sell	02.03.2010 16:00:00	1.3546	0.01	26.03.2010 12:12:00	1.34004	\$ 16.02
56	Sell	19.03.2010 21:00:00	1.35351	0.01	26.03.2010 12:12:00	1.34004	\$ 13.9
57	Sell	22.03.2010 07:00:00	1.35035	0.01	26.03.2010 12:12:00	1.34004	\$ 10.55
58	Sell	26.03.2010 14:00:00	1.33739	0.01	23.04.2010 11:03:00	1.33349	\$ 5.6
59	Sell	06.04.2010 19:00:00	1.33731	0.01	23.04.2010 11:03:00	1.33349	\$ 4.85
60	Sell	07.04.2010 08:00:00	1.33626	0.01	23.04.2010 11:03:00	1.33349	\$ 3.74
61	Sell	23.04.2010 15:00:00	1.32859	0.01	06.05.2010 23:08:00	1.26603	\$ 63.35
62	Sell	27.04.2010 18:00:00	1.3229	0.01	06.05.2010 23:08:00	1.26603	\$ 57.42
63	Sell	28.04.2010 08:00:00	1.31885	0.01	06.05.2010 23:08:00	1.26603	\$ 53.31
64	Sell	07.05.2010 03:00:00	1.2613	0.01	17.05.2010 14:03:00	1.23665	\$ 25.26
65	Sell	12.05.2010 07:00:00	1.26056	0.01	17.05.2010 14:03:00	1.23665	\$ 24.21
66	Sell	13.05.2010 11:00:00	1.258	0.01	17.05.2010 14:03:00	1.23665	\$ 21.59
67	Sell	17.05.2010 18:00:00	1.22988	0.01	19.05.2010 14:14:00	1.22768	\$ 2.32
68	Sell	19.05.2010 09:00:00	1.22124	0.01	19.05.2010 14:14:00	1.22768	\$ -6.44
69	Sell	19.05.2010 11:00:00	1.21764	0.01	19.05.2010 14:14:00	1.22768	\$ -10.04
70	Sell	20.05.2010 02:00:00	1.2385	0.02	25.05.2010 20:25:00	1.23109	\$ 15.43
71	Sell	20.05.2010 08:00:00	1.2343	0.02	25.05.2010 20:25:00	1.23109	\$ 7.03
72	Sell	20.05.2010 13:00:00	1.2333	0.02	25.05.2010 20:25:00	1.23109	\$ 5.03
73	Sell	26.05.2010 02:00:00	1.23325	0.01	01.06.2010 16:06:00	1.2244	\$ 9.22
74	Sell	26.05.2010 08:00:00	1.22718	0.01	01.06.2010 16:06:00	1.2244	\$ 3.15
75	Sell	26.05.2010 21:00:00	1.21998	0.01	01.06.2010 16:06:00	1.2244	\$ -4.05
76	Sell	01.06.2010 21:00:00	1.22576	0.01	08.06.2010 17:57:00	1.20091	\$ 25.28
77	Sell	02.06.2010 06:00:00	1.22123	0.01	08.06.2010 17:57:00	1.20091	\$ 20.69
78	Sell	04.06.2010 05:00:00	1.2177	0.01	08.06.2010 17:57:00	1.20091	\$ 17.03

79	Sell	08.06.2010 20:00:00	1.1932	0.01	15.07.2010 12:31:00	1.28333	\$ -87.88
80	Sell	16.07.2010 01:00:00	1.2921	0.02	22.07.2010 12:41:00	1.28651	\$ 11.91
81	Sell	16.07.2010 08:00:00	1.29043	0.02	22.07.2010 12:41:00	1.28651	\$ 8.57
82	Sell	19.07.2010 01:00:00	1.28987	0.02	22.07.2010 12:41:00	1.28651	\$ 7.09
83	Sell	22.07.2010 20:00:00	1.29046	0.04	16.08.2010 15:10:00	1.28669	\$ 21.17
84	Sell	22.07.2010 22:00:00	1.28842	0.04	16.08.2010 15:10:00	1.28669	\$ 13.01
85	Sell	11.08.2010 23:00:00	1.28623	0.04	16.08.2010 15:10:00	1.28669	\$ -0.62
86	Sell	16.08.2010 20:00:00	1.2825	0.08	25.08.2010 10:01:00	1.27207	\$ 87.82
87	Sell	17.08.2010 03:00:00	1.28188	0.08	25.08.2010 10:01:00	1.27207	\$ 82.38
88	Sell	19.08.2010 11:00:00	1.28142	0.08	25.08.2010 10:01:00	1.27207	\$ 77.72
89	Sell	25.08.2010 13:00:00	1.26444	0.01	06.09.2010 00:00:00	1.28947	\$ -24.3
90	Sell	31.08.2010 09:00:00	1.26353	0.01	06.09.2010 00:00:00	1.28947	\$ -25.57
91	Buy	06.09.2010 02:00:00	1.28875	0.02	17.09.2010 16:32:00	1.30264	\$ 25.29
92	Buy	06.09.2010 06:00:00	1.28951	0.02	17.09.2010 16:32:00	1.30264	\$ 23.77
93	Buy	14.09.2010 10:00:00	1.28997	0.02	17.09.2010 16:32:00	1.30264	\$ 24.66
94	Buy	20.09.2010 01:00:00	1.30433	0.01	24.09.2010 01:55:00	1.33068	\$ 25.9
95	Buy	20.09.2010 03:00:00	1.30663	0.01	24.09.2010 01:55:00	1.33068	\$ 23.6
96	Buy	20.09.2010 09:00:00	1.31043	0.01	24.09.2010 01:55:00	1.33068	\$ 19.8
97	Buy	24.09.2010 04:01:00	1.33263	0.01	05.10.2010 01:43:00	1.36595	\$ 32.07
98	Buy	24.09.2010 11:00:00	1.33777	0.01	05.10.2010 01:43:00	1.36595	\$ 26.93
99	Buy	24.09.2010 22:01:00	1.34926	0.01	05.10.2010 01:43:00	1.36595	\$ 15.44
100	Buy	05.10.2010 07:00:00	1.36868	0.01	07.10.2010 18:22:00	1.38965	\$ 20.74
101	Buy	06.10.2010 02:00:00	1.38546	0.01	07.10.2010 18:22:00	1.38965	\$ 4.08
102	Buy	06.10.2010 16:00:00	1.38773	0.01	07.10.2010 18:22:00	1.38965	\$ 1.81
103	Buy	07.10.2010 21:00:00	1.39304	0.01	15.10.2010 16:04:00	1.40185	\$ 7.9
104	Buy	08.10.2010 05:00:00	1.39573	0.01	15.10.2010 16:04:00	1.40185	\$ 5.33
105	Buy	11.10.2010 00:00:00	1.40033	0.01	15.10.2010 16:04:00	1.40185	\$ 1.07
106	Buy	18.10.2010 00:00:00	1.3974	0.01	03.11.2010 19:28:00	1.40477	\$ 5.56
107	Buy	21.10.2010 17:00:00	1.4004	0.01	03.11.2010 19:28:00	1.40477	\$ 2.9
108	Buy	25.10.2010 13:00:00	1.40388	0.01	03.11.2010 19:28:00	1.40477	\$ -0.13
109	Buy	04.11.2010 04:00:00	1.41243	0.01	05.11.2010 11:33:00	1.41493	\$ 2.39
110	Buy	04.11.2010 09:00:00	1.41425	0.01	05.11.2010 11:33:00	1.41493	\$ 0.57
111	Buy	05.11.2010 01:00:00	1.42292	0.01	05.11.2010 11:33:00	1.41493	\$ -7.99
112	Buy	08.11.2010 01:00:00	1.40754	0.02	29.11.2010 12:07:00	1.31741	\$ -185.02
113	Buy	29.11.2010 21:00:00	1.31169	0.04	06.12.2010 09:58:00	1.33053	\$ 72.19
114	Buy	30.11.2010 02:00:00	1.31195	0.04	06.12.2010 09:58:00	1.33053	\$ 71.6
115	Buy	01.12.2010 18:00:00	1.31489	0.04	06.12.2010 09:58:00	1.33053	\$ 60.29
116	Buy	06.12.2010 17:00:00	1.32884	0.01	14.12.2010 16:11:00	1.33646	\$ 6.71
117	Buy	07.12.2010 04:00:00	1.33277	0.01	14.12.2010 16:11:00	1.33646	\$ 2.9
118	Buy	07.12.2010 10:00:00	1.33401	0.01	14.12.2010 16:11:00	1.33646	\$ 1.66
119	Buy	14.12.2010 19:00:00	1.34136	0.01	17.01.2011 00:00:00	1.33704	\$ -8.17
120	Sell	17.01.2011 01:00:00	1.33783	0.02	18.01.2011 09:32:00	1.33781	\$ 0.16
121	Sell	17.01.2011 22:00:00	1.32844	0.02	18.01.2011 09:32:00	1.33781	\$ -18.62
122	Sell	18.01.2011 15:00:00	1.33896	0.04	14.03.2011 00:00:00	1.3952	\$ -211.57
123	Sell	18.01.2011 19:00:00	1.33594	0.04	14.03.2011 00:00:00	1.3952	\$ -223.65
124	Buy	14.03.2011 07:00:00	1.39305	0.08	23.03.2011 14:25:00	1.41159	\$ 140.16
125	Buy	14.03.2011 11:00:00	1.39537	0.08	23.03.2011 14:25:00	1.41159	\$ 121.6
126	Buy	14.03.2011 16:00:00	1.39658	0.08	23.03.2011 14:25:00	1.41159	\$ 111.92
127	Buy	23.03.2011 16:00:00	1.41482	0.16	14.04.2011 12:30:00	1.43873	\$ 342.67
128	Buy	24.03.2011 16:00:00	1.41993	0.16	14.04.2011 12:30:00	1.43873	\$ 262.73
129	Buy	31.03.2011 20:00:00	1.42026	0.16	14.04.2011 12:30:00	1.43873	\$ 270.14
130	Buy	14.04.2011 15:00:00	1.44309	0.01	26.04.2011 02:18:00	1.45158	\$ 7.13
131	Buy	15.04.2011 02:00:00	1.45016	0.01	26.04.2011 02:18:00	1.45158	\$ 0.17
132	Buy	20.04.2011 17:00:00	1.45108	0.01	26.04.2011 02:18:00	1.45158	\$ -0.18
133	Buy	26.04.2011 09:00:00	1.45644	0.01	03.05.2011 10:08:00	1.47692	\$ 19.69
134	Buy	26.04.2011 15:00:00	1.46317	0.01	03.05.2011 10:08:00	1.47692	\$ 12.96
135	Buy	27.04.2011 07:00:00	1.46922	0.01	03.05.2011 10:08:00	1.47692	\$ 7.02
136	Buy	03.05.2011 15:00:00	1.48076	0.01	12.07.2011 09:09:00	1.39063	\$ -98.06
137	Buy	04.05.2011 02:00:00	1.4837	0.01	12.07.2011 09:09:00	1.39063	\$ -100.89
138	Buy	12.07.2011 12:00:00	1.39199	0.02	14.07.2011 16:58:00	1.41488	\$ 45.33

139	Buy	13.07.2011 02:00:00	1.39902	0.02	14.07.2011 16:58:00	1.41488	\$ 31.49
140	Buy	13.07.2011 06:00:00	1.40095	0.02	14.07.2011 16:58:00	1.41488	\$ 27.63
141	Buy	14.07.2011 20:00:00	1.41729	0.04	27.07.2011 16:45:00	1.4403	\$ 86.15
142	Buy	15.07.2011 12:00:00	1.41732	0.04	27.07.2011 16:45:00	1.4403	\$ 86.48
143	Buy	19.07.2011 17:00:00	1.41894	0.04	27.07.2011 16:45:00	1.4403	\$ 81.81
144	Buy	27.07.2011 21:00:00	1.43724	0.01	01.08.2011 00:00:00	1.43607	\$ -1.74
145	Buy	28.07.2011 10:00:00	1.43751	0.01	01.08.2011 00:00:00	1.43607	\$ -1.89
146	Sell	01.08.2011 01:00:00	1.43613	0.02	03.08.2011 10:11:00	1.42758	\$ 17.34
147	Sell	02.08.2011 00:00:00	1.42535	0.02	03.08.2011 10:11:00	1.42758	\$ -4.34
148	Sell	02.08.2011 06:00:00	1.42486	0.02	03.08.2011 10:11:00	1.42758	\$ -5.32
149	Sell	03.08.2011 16:00:00	1.43051	0.01	05.08.2011 14:30:00	1.41886	\$ 11.77
150	Sell	04.08.2011 10:00:00	1.42616	0.01	05.08.2011 14:30:00	1.41886	\$ 7.36
151	Sell	05.08.2011 09:00:00	1.40894	0.01	05.08.2011 14:30:00	1.41886	\$ -9.92
152	Sell	05.08.2011 18:00:00	1.41546	0.01	07.09.2011 09:08:00	1.41066	\$ 6.81
153	Sell	05.09.2011 01:00:00	1.41478	0.01	07.09.2011 09:08:00	1.41066	\$ 4.24
154	Sell	05.09.2011 12:00:00	1.41305	0.01	07.09.2011 09:08:00	1.41066	\$ 2.51
155	Sell	07.09.2011 11:00:00	1.40569	0.01	12.09.2011 11:48:00	1.36322	\$ 42.77
156	Sell	08.09.2011 12:00:00	1.40546	0.01	12.09.2011 11:48:00	1.36322	\$ 42.48
157	Sell	09.09.2011 06:00:00	1.3913	0.01	12.09.2011 11:48:00	1.36322	\$ 28.26
158	Sell	12.09.2011 17:00:00	1.36067	0.01	22.09.2011 20:22:00	1.35189	\$ 9.39
159	Sell	13.09.2011 10:00:00	1.35859	0.01	22.09.2011 20:22:00	1.35189	\$ 7.25
160	Sell	22.09.2011 11:00:00	1.35207	0.01	22.09.2011 20:22:00	1.35189	\$ 0.18
161	Sell	22.09.2011 22:00:00	1.34736	0.01	04.10.2011 16:49:00	1.32791	\$ 20.18
162	Sell	23.09.2011 19:00:00	1.34694	0.01	04.10.2011 16:49:00	1.32791	\$ 19.7
163	Sell	26.09.2011 03:00:00	1.34182	0.01	04.10.2011 16:49:00	1.32791	\$ 14.4
164	Sell	04.10.2011 20:00:00	1.32412	0.01	27.10.2011 15:19:00	1.41425	\$ -88.73
165	Sell	27.10.2011 22:00:00	1.41841	0.02	01.11.2011 19:30:00	1.37418	\$ 89.07
166	Sell	28.10.2011 03:00:00	1.41824	0.02	01.11.2011 19:30:00	1.37418	\$ 88.61
167	Sell	28.10.2011 10:00:00	1.417	0.02	01.11.2011 19:30:00	1.37418	\$ 86.13
168	Sell	02.11.2011 01:00:00	1.36615	0.01	10.11.2011 13:35:00	1.36376	\$ 2.88
169	Sell	10.11.2011 08:00:00	1.3505	0.01	10.11.2011 13:35:00	1.36376	\$ -13.26
170	Sell	10.11.2011 16:00:00	1.35785	0.02	18.11.2011 12:46:00	1.35546	\$ 5.75
171	Sell	15.11.2011 10:00:00	1.35739	0.02	18.11.2011 12:46:00	1.35546	\$ 4.23
172	Sell	15.11.2011 17:00:00	1.35207	0.02	18.11.2011 12:46:00	1.35546	\$ -6.41
173	Sell	18.11.2011 16:00:00	1.35398	0.04	28.11.2011 09:57:00	1.33452	\$ 80.27
174	Sell	18.11.2011 22:00:00	1.3516	0.04	28.11.2011 09:57:00	1.33452	\$ 70.75
175	Sell	21.11.2011 17:00:00	1.3466	0.04	28.11.2011 09:57:00	1.33452	\$ 50.02
176	Sell	28.11.2011 14:00:00	1.33532	0.01	16.12.2011 13:42:00	1.30795	\$ 28.47
177	Sell	28.11.2011 18:00:00	1.33335	0.01	16.12.2011 13:42:00	1.30795	\$ 26.5
178	Sell	29.11.2011 02:00:00	1.32977	0.01	16.12.2011 13:42:00	1.30795	\$ 22.85
179	Sell	16.12.2011 16:00:00	1.3028	0.01	30.12.2011 16:53:00	1.2991	\$ 4.55
180	Sell	19.12.2011 02:00:00	1.3022	0.01	30.12.2011 16:53:00	1.2991	\$ 3.77
181	Sell	19.12.2011 13:00:00	1.30169	0.01	30.12.2011 16:53:00	1.2991	\$ 3.26
182	Sell	30.12.2011 19:00:00	1.2959	0.01	10.01.2012 10:30:00	1.27994	\$ 16.63
183	Sell	02.01.2012 02:00:00	1.29418	0.01	10.01.2012 10:30:00	1.27994	\$ 14.73
184	Sell	05.01.2012 11:00:00	1.28676	0.01	10.01.2012 10:30:00	1.27994	\$ 7.12
185	Sell	10.01.2012 17:00:00	1.2777	0.01	09.04.2012 00:00:00	1.30974	\$ -26.56
187	Sell	13.01.2012 23:00:00	1.26754	0.01	09.04.2012 00:00:00	1.30974	\$ -36.9
186	Sell	11.01.2012 13:00:00	1.26991	0.01	09.04.2012 00:00:00	1.30974	\$ -34.41
188	Buy	09.04.2012 07:00:00	1.30704	0.02	02.05.2012 11:23:00	1.31508	\$ 10.87
189	Buy	09.04.2012 18:00:00	1.30861	0.02	02.05.2012 11:23:00	1.31508	\$ 7.73
190	Buy	10.04.2012 02:00:00	1.31097	0.02	02.05.2012 11:23:00	1.31508	\$ 3.23
191	Buy	02.05.2012 16:00:00	1.31503	0.04	28.05.2012 00:00:00	1.25707	\$ -243.62
192	Buy	03.05.2012 15:00:00	1.31696	0.04	28.05.2012 00:00:00	1.25707	\$ -250.89
193	Sell	28.05.2012 10:00:00	1.25869	0.08	01.06.2012 15:33:00	1.24215	\$ 134.27
194	Sell	28.05.2012 15:00:00	1.25719	0.08	01.06.2012 15:33:00	1.24215	\$ 122.27
195	Sell	29.05.2012 02:00:00	1.2521	0.08	01.06.2012 15:33:00	1.24215	\$ 81.06
196	Sell	04.06.2012 02:00:00	1.23967	0.16	17.07.2012 03:23:00	1.22955	\$ 203.79
197	Sell	05.07.2012 15:00:00	1.23966	0.16	17.07.2012 03:23:00	1.22955	\$ 173.45
198	Sell	06.07.2012 01:00:00	1.23828	0.16	17.07.2012 03:23:00	1.22955	\$ 150.39

199	Sell	17.07.2012 08:00:00	1.2284	0.01	26.07.2012 12:19:00	1.21751	\$ 11.44
200	Sell	17.07.2012 13:00:00	1.22796	0.01	26.07.2012 12:19:00	1.21751	\$ 11.0
201	Sell	18.07.2012 12:00:00	1.22367	0.01	26.07.2012 12:19:00	1.21751	\$ 6.65
202	Sell	26.07.2012 18:00:00	1.22811	0.01	03.08.2012 12:30:00	1.2267	\$ 1.9
203	Sell	27.07.2012 00:00:00	1.22787	0.01	03.08.2012 12:30:00	1.2267	\$ 1.6
204	Sell	27.07.2012 10:00:00	1.22742	0.01	03.08.2012 12:30:00	1.2267	\$ 1.15
205	Sell	03.08.2012 15:00:00	1.22569	0.01	14.09.2012 16:03:00	1.31582	\$ -87.57
206	Sell	14.09.2012 19:00:00	1.31225	0.02	01.10.2012 00:00:00	1.28501	\$ 56.55
208	Sell	18.09.2012 02:00:00	1.31074	0.02	01.10.2012 00:00:00	1.28501	\$ 53.04
207	Sell	17.09.2012 01:00:00	1.31153	0.02	01.10.2012 00:00:00	1.28501	\$ 54.74
209	Buy	01.10.2012 06:00:00	1.28216	0.01	08.10.2012 12:21:00	1.29388	\$ 10.93
210	Buy	01.10.2012 15:00:00	1.29246	0.01	08.10.2012 12:21:00	1.29388	\$ 0.63
211	Buy	04.10.2012 05:00:00	1.29273	0.01	08.10.2012 12:21:00	1.29388	\$ 0.7
212	Buy	08.10.2012 15:00:00	1.29691	0.01	23.10.2012 12:43:00	1.30064	\$ 2.03
213	Buy	09.10.2012 02:00:00	1.29758	0.01	23.10.2012 12:43:00	1.30064	\$ 1.47
214	Buy	16.10.2012 20:00:00	1.30485	0.01	23.10.2012 12:43:00	1.30064	\$ -5.0
215	Buy	23.10.2012 19:00:00	1.29762	0.02	06.12.2012 16:01:00	1.29933	\$ -6.55
216	Buy	23.10.2012 22:00:00	1.29802	0.02	06.12.2012 16:01:00	1.29933	\$ -7.35
217	Buy	24.10.2012 04:00:00	1.29888	0.02	06.12.2012 16:01:00	1.29933	\$ -8.85
218	Buy	06.12.2012 22:00:00	1.29701	0.04	21.12.2012 15:40:00	1.31756	\$ 75.4
219	Buy	07.12.2012 03:00:00	1.29704	0.04	21.12.2012 15:40:00	1.31756	\$ 75.73
220	Buy	12.12.2012 04:00:00	1.30115	0.04	21.12.2012 15:40:00	1.31756	\$ 61.56
221	Buy	21.12.2012 20:00:00	1.31804	0.01	15.01.2013 19:57:00	1.32711	\$ 6.24
222	Buy	24.12.2012 05:00:00	1.31834	0.01	15.01.2013 19:57:00	1.32711	\$ 6.28
223	Buy	26.12.2012 09:00:00	1.3197	0.01	15.01.2013 19:57:00	1.32711	\$ 5.14
224	Buy	16.01.2013 02:00:00	1.33043	0.01	04.02.2013 11:03:00	1.35786	\$ 25.28
225	Buy	16.01.2013 12:00:00	1.33133	0.01	04.02.2013 11:03:00	1.35786	\$ 24.38
226	Buy	17.01.2013 19:00:00	1.3364	0.01	04.02.2013 11:03:00	1.35786	\$ 19.42
227	Buy	04.02.2013 15:00:00	1.35716	0.01	08.04.2013 00:00:00	1.29937	\$ -64.93
228	Buy	06.02.2013 03:00:00	1.3596	0.01	08.04.2013 00:00:00	1.29937	\$ -67.14
229	Sell	08.04.2013 16:00:00	1.30235	0.02	21.05.2013 19:02:00	1.29295	\$ 24.03
230	Sell	08.04.2013 21:00:00	1.30035	0.02	21.05.2013 19:02:00	1.29295	\$ 20.03
231	Sell	23.04.2013 11:00:00	1.29828	0.02	21.05.2013 19:02:00	1.29295	\$ 14.07
232	Sell	21.05.2013 21:00:00	1.29006	0.04	08.07.2013 00:00:00	1.28217	\$ 43.25
234	Sell	23.05.2013 08:00:00	1.28386	0.04	08.07.2013 00:00:00	1.28217	\$ 17.96
233	Sell	22.05.2013 18:00:00	1.28651	0.04	08.07.2013 00:00:00	1.28217	\$ 28.8
235	Buy	08.07.2013 09:00:00	1.28277	0.01	11.07.2013 03:38:00	1.30746	\$ 24.35
236	Buy	08.07.2013 21:00:00	1.28758	0.01	11.07.2013 03:38:00	1.30746	\$ 19.54
237	Buy	11.07.2013 06:00:00	1.31356	0.01	01.08.2013 14:31:00	1.32126	\$ 5.32
238	Buy	16.07.2013 17:00:00	1.31385	0.01	01.08.2013 14:31:00	1.32126	\$ 5.6
239	Buy	17.07.2013 10:00:00	1.31475	0.01	01.08.2013 14:31:00	1.32126	\$ 4.81
240	Buy	01.08.2013 16:00:00	1.322	0.01	13.08.2013 14:32:00	1.32682	\$ 3.46
241	Buy	02.08.2013 09:00:00	1.32201	0.01	13.08.2013 14:32:00	1.32682	\$ 3.56
242	Buy	02.08.2013 15:00:00	1.32695	0.01	13.08.2013 14:32:00	1.32682	\$ -1.38
243	Buy	13.08.2013 19:00:00	1.32537	0.01	22.08.2013 11:52:00	1.33198	\$ 5.59
244	Buy	14.08.2013 02:00:00	1.32663	0.01	22.08.2013 11:52:00	1.33198	\$ 4.44
245	Buy	15.08.2013 11:00:00	1.32898	0.01	22.08.2013 11:52:00	1.33198	\$ 2.21
246	Buy	22.08.2013 15:00:00	1.33426	0.01	09.10.2013 13:00:00	1.35135	\$ 11.65
247	Buy	23.08.2013 01:00:00	1.3361	0.01	09.10.2013 13:00:00	1.35135	\$ 9.92
248	Buy	23.08.2013 17:00:00	1.34027	0.01	09.10.2013 13:00:00	1.35135	\$ 5.75
249	Buy	09.10.2013 18:00:00	1.35132	0.01	30.10.2013 19:27:00	1.37	\$ 16.3
250	Buy	10.10.2013 18:00:00	1.35357	0.01	30.10.2013 19:27:00	1.37	\$ 14.16
251	Buy	11.10.2013 09:00:00	1.35376	0.01	30.10.2013 19:27:00	1.37	\$ 14.09
252	Buy	31.10.2013 03:00:00	1.37382	0.01	27.12.2013 18:15:00	1.3761	\$ -4.18
253	Buy	09.12.2013 20:00:00	1.37407	0.01	27.12.2013 18:15:00	1.3761	\$ -0.01
254	Buy	10.12.2013 10:00:00	1.37544	0.01	27.12.2013 18:15:00	1.3761	\$ -1.27
255	Buy	30.12.2013 01:00:00	1.37521	0.02	19.03.2014 19:58:00	1.38346	\$ -1.4
256	Buy	30.12.2013 09:00:00	1.37594	0.02	19.03.2014 19:58:00	1.38346	\$ -2.86
257	Buy	31.12.2013 01:00:00	1.38093	0.02	19.03.2014 19:58:00	1.38346	\$ -12.62
258	Buy	20.03.2014 02:00:00	1.38246	0.04	08.05.2014 16:01:00	1.38612	\$ -7.57

259	Buy	25.03.2014 01:00:00	1.38368	0.04	08.05.2014 16:01:00	1.38612	\$ -10.18
260	Buy	09.04.2014 21:00:00	1.38549	0.04	08.05.2014 16:01:00	1.38612	\$ -10.62
261	Buy	09.05.2014 02:00:00	1.38436	0.08	23.06.2014 00:00:00	1.35949	\$ -239.75
262	Sell	23.06.2014 01:00:00	1.3594	0.16	16.09.2014 18:29:00	1.29927	\$ 1044.85
263	Sell	23.06.2014 10:00:00	1.35912	0.16	16.09.2014 18:29:00	1.29927	\$ 1040.37
264	Sell	04.07.2014 15:00:00	1.35857	0.16	16.09.2014 18:29:00	1.29927	\$ 1020.86
265	Sell	16.09.2014 23:00:00	1.29594	0.01	06.10.2014 20:33:00	1.26339	\$ 33.77
266	Sell	17.09.2014 14:00:00	1.29564	0.01	06.10.2014 20:33:00	1.26339	\$ 33.41
267	Sell	17.09.2014 22:00:00	1.2875	0.01	06.10.2014 20:33:00	1.26339	\$ 25.27
268	Sell	07.10.2014 02:00:00	1.26434	0.01	04.11.2014 16:50:00	1.25718	\$ 8.86
269	Sell	07.10.2014 09:00:00	1.2631	0.01	04.11.2014 16:50:00	1.25718	\$ 7.62
270	Sell	07.10.2014 12:00:00	1.25965	0.01	04.11.2014 16:50:00	1.25718	\$ 4.17
271	Sell	04.11.2014 20:00:00	1.25521	0.01	10.11.2014 10:35:00	1.24904	\$ 6.54
272	Sell	04.11.2014 23:00:00	1.25443	0.01	10.11.2014 10:35:00	1.24904	\$ 5.76
273	Sell	05.11.2014 07:00:00	1.25437	0.01	10.11.2014 10:35:00	1.24904	\$ 5.63
274	Sell	10.11.2014 15:00:00	1.24855	0.01	04.12.2014 15:57:00	1.24127	\$ 8.74
275	Sell	10.11.2014 22:00:00	1.24212	0.01	04.12.2014 15:57:00	1.24127	\$ 2.31
276	Sell	11.11.2014 06:00:00	1.24182	0.01	04.12.2014 15:57:00	1.24127	\$ 1.95
277	Sell	04.12.2014 20:00:00	1.23739	0.01	15.01.2015 11:49:00	1.17061	\$ 69.34
278	Sell	05.12.2014 11:00:00	1.2372	0.01	15.01.2015 11:49:00	1.17061	\$ 69.09
279	Sell	05.12.2014 17:00:00	1.22762	0.01	15.01.2015 11:49:00	1.17061	\$ 59.51
280	Sell	16.01.2015 03:00:00	1.16157	0.01	23.01.2015 16:04:00	1.12478	\$ 37.22
281	Sell	16.01.2015 17:00:00	1.15497	0.01	23.01.2015 16:04:00	1.12478	\$ 30.62
282	Sell	21.01.2015 02:00:00	1.15447	0.01	23.01.2015 16:04:00	1.12478	\$ 29.81
283	Sell	23.01.2015 21:00:00	1.12186	0.01	12.03.2015 09:57:00	1.06276	\$ 62.02
284	Sell	27.02.2015 17:00:00	1.11867	0.01	12.03.2015 09:57:00	1.06276	\$ 56.7
285	Sell	02.03.2015 10:00:00	1.11785	0.01	12.03.2015 09:57:00	1.06276	\$ 55.7
286	Sell	12.03.2015 16:00:00	1.06136	0.01	16.03.2015 15:53:00	1.05952	\$ 2.08
287	Sell	13.03.2015 07:00:00	1.06039	0.01	16.03.2015 15:53:00	1.05952	\$ 1.05
288	Sell	13.03.2015 13:00:00	1.05817	0.01	16.03.2015 15:53:00	1.05952	\$ -1.17
289	Sell	16.03.2015 21:00:00	1.05829	0.01	29.06.2015 00:05:00	1.1006	\$ -35.92
291	Sell	17.03.2015 08:00:00	1.05576	0.01	29.06.2015 00:05:00	1.1006	\$ -38.51
290	Sell	17.03.2015 03:00:00	1.05623	0.01	29.06.2015 00:05:00	1.1006	\$ -38.04
292	Buy	29.06.2015 04:00:00	1.10182	0.02	30.06.2015 11:47:00	1.11456	\$ 25.25
293	Buy	30.06.2015 09:00:00	1.11853	0.02	30.06.2015 11:47:00	1.11456	\$ -7.94
294	Buy	30.06.2015 14:00:00	1.11857	0.04	24.08.2015 17:10:00	1.15818	\$ 133.51
295	Buy	20.08.2015 18:00:00	1.11964	0.04	24.08.2015 17:10:00	1.15818	\$ 152.35
296	Buy	20.08.2015 23:00:00	1.12181	0.04	24.08.2015 17:10:00	1.15818	\$ 143.67
297	Buy	24.08.2015 22:00:00	1.16012	0.01	10.11.2015 14:54:00	1.06999	\$ -98.97
298	Buy	10.11.2015 21:00:00	1.07192	0.02	23.11.2015 00:01:00	1.06372	\$ -19.35
300	Buy	13.11.2015 14:00:00	1.07908	0.02	23.11.2015 00:01:00	1.06372	\$ -32.99
299	Buy	11.11.2015 12:00:00	1.07506	0.02	23.11.2015 00:01:00	1.06372	\$ -25.4
301	Sell	23.11.2015 14:00:00	1.06244	0.04	29.02.2016 00:00:00	1.09143	\$ -92.1
303	Sell	25.11.2015 12:00:00	1.06113	0.04	29.02.2016 00:00:00	1.09143	\$ -97.83
302	Sell	23.11.2015 18:00:00	1.06145	0.04	29.02.2016 00:00:00	1.09143	\$ -96.06
304	Buy	29.02.2016 03:00:00	1.09245	0.08	11.03.2016 12:57:00	1.10857	\$ 118.99
305	Buy	04.03.2016 04:00:00	1.0945	0.08	11.03.2016 12:57:00	1.10857	\$ 106.21
306	Buy	04.03.2016 08:00:00	1.09542	0.08	11.03.2016 12:57:00	1.10857	\$ 98.85
307	Buy	11.03.2016 15:00:00	1.10993	0.16	22.03.2016 10:23:00	1.12102	\$ 157.5
308	Buy	14.03.2016 01:00:00	1.11658	0.16	22.03.2016 10:23:00	1.12102	\$ 56.54
309	Buy	17.03.2016 05:00:00	1.12216	0.16	22.03.2016 10:23:00	1.12102	\$ -27.31
310	Buy	22.03.2016 15:00:00	1.12254	0.01	13.04.2016 12:00:00	1.13325	\$ 8.22
311	Buy	22.03.2016 18:00:00	1.12282	0.01	13.04.2016 12:00:00	1.13325	\$ 7.94
312	Buy	29.03.2016 20:00:00	1.12655	0.01	13.04.2016 12:00:00	1.13325	\$ 5.0
313	Buy	13.04.2016 16:00:00	1.13137	0.01	04.05.2016 04:36:00	1.14839	\$ 14.64
314	Buy	18.04.2016 18:00:00	1.13299	0.01	04.05.2016 04:36:00	1.14839	\$ 13.59
315	Buy	19.04.2016 13:00:00	1.13325	0.01	04.05.2016 04:36:00	1.14839	\$ 13.44
316	Buy	04.05.2016 09:00:00	1.1486	0.01	18.07.2016 00:00:00	1.10497	\$ -52.13
317	Buy	04.05.2016 15:00:00	1.1506	0.01	18.07.2016 00:00:00	1.10497	\$ -54.13
318	Sell	18.07.2016 11:00:00	1.10514	0.02	03.10.2016 00:00:00	1.12275	\$ -25.85

320	Sell	20.07.2016 10:00:00	1.09884	0.02	03.10.2016 00:00:00	1.12275	\$ -38.69
319	Sell	20.07.2016 02:00:00	1.10176	0.02	03.10.2016 00:00:00	1.12275	\$ -32.85
321	Buy	03.10.2016 06:00:00	1.12326	0.04	31.10.2016 00:00:00	1.09841	\$ -112.09
322	Sell	31.10.2016 03:00:00	1.09705	0.08	28.11.2016 04:00:00	1.06509	\$ 269.31
323	Sell	31.10.2016 09:00:00	1.096	0.08	28.11.2016 04:00:00	1.06509	\$ 260.91
324	Sell	10.11.2016 07:00:00	1.09256	0.08	28.11.2016 04:00:00	1.06509	\$ 228.52
325	Sell	28.11.2016 09:00:00	1.06471	0.01	22.12.2016 17:07:00	1.04852	\$ 17.65
326	Sell	28.11.2016 12:00:00	1.06417	0.01	22.12.2016 17:07:00	1.04852	\$ 17.11
327	Sell	28.11.2016 20:00:00	1.05844	0.01	22.12.2016 17:07:00	1.04852	\$ 11.38
328	Sell	22.12.2016 20:00:00	1.04411	0.01	27.03.2017 00:02:00	1.08329	\$ -33.4
330	Sell	28.12.2016 20:00:00	1.03834	0.01	27.03.2017 00:02:00	1.08329	\$ -39.53
329	Sell	23.12.2016 10:00:00	1.04387	0.01	27.03.2017 00:02:00	1.08329	\$ -33.7
331	Buy	27.03.2017 01:00:00	1.08338	0.02	09.05.2017 14:47:00	1.08856	\$ 0.61
332	Buy	27.03.2017 15:00:00	1.08777	0.02	09.05.2017 14:47:00	1.08856	\$ -8.17
333	Buy	25.04.2017 16:00:00	1.08899	0.02	09.05.2017 14:47:00	1.08856	\$ -4.03
334	Buy	09.05.2017 18:00:00	1.08912	0.04	30.05.2017 01:06:00	1.1136	\$ 88.4
335	Buy	10.05.2017 11:00:00	1.08921	0.04	30.05.2017 01:06:00	1.1136	\$ 88.49
336	Buy	12.05.2017 23:00:00	1.09305	0.04	30.05.2017 01:06:00	1.1136	\$ 74.04
337	Buy	30.05.2017 09:00:00	1.1117	0.01	15.06.2017 12:43:00	1.11634	\$ 2.83
338	Buy	30.05.2017 11:00:00	1.11414	0.01	15.06.2017 12:43:00	1.11634	\$ 0.39
339	Buy	30.05.2017 22:00:00	1.11895	0.01	15.06.2017 12:43:00	1.11634	\$ -4.42
340	Buy	15.06.2017 19:00:00	1.11524	0.02	05.07.2017 13:07:00	1.13131	\$ 27.61
341	Buy	16.06.2017 10:00:00	1.11548	0.02	05.07.2017 13:07:00	1.13131	\$ 27.35
342	Buy	16.06.2017 16:00:00	1.11734	0.02	05.07.2017 13:07:00	1.13131	\$ 23.63
343	Buy	05.07.2017 18:00:00	1.13301	0.01	04.08.2017 17:02:00	1.1778	\$ 41.39
344	Buy	06.07.2017 11:00:00	1.13527	0.01	04.08.2017 17:02:00	1.1778	\$ 39.24
345	Buy	07.07.2017 08:00:00	1.14159	0.01	04.08.2017 17:02:00	1.1778	\$ 33.04
346	Buy	04.08.2017 22:00:00	1.17652	0.01	30.08.2017 14:28:00	1.19379	\$ 14.32
347	Buy	07.08.2017 11:00:00	1.18108	0.01	30.08.2017 14:28:00	1.19379	\$ 10.1
348	Buy	14.08.2017 04:00:00	1.182	0.01	30.08.2017 14:28:00	1.19379	\$ 9.98
349	Buy	31.08.2017 01:00:00	1.18947	0.01	11.09.2017 19:03:00	1.19601	\$ 5.29
350	Buy	01.09.2017 06:00:00	1.19064	0.01	11.09.2017 19:03:00	1.19601	\$ 4.24
351	Buy	04.09.2017 18:00:00	1.19132	0.01	11.09.2017 19:03:00	1.19601	\$ 3.9
352	Buy	12.09.2017 02:00:00	1.19634	0.01	11.12.2017 00:00:00	1.1765	\$ -30.04
354	Buy	13.09.2017 12:00:00	1.19806	0.01	11.12.2017 00:00:00	1.1765	\$ -31.65
353	Buy	12.09.2017 10:00:00	1.19764	0.01	11.12.2017 00:00:00	1.1765	\$ -31.34
355	Sell	11.12.2017 01:00:00	1.17694	0.02	08.01.2018 00:00:00	1.20281	\$ -48.33
357	Sell	13.12.2017 01:00:00	1.17369	0.02	08.01.2018 00:00:00	1.20281	\$ -55.08
356	Sell	12.12.2017 05:00:00	1.17682	0.02	08.01.2018 00:00:00	1.20281	\$ -48.69
358	Buy	08.01.2018 03:00:00	1.20441	0.04	17.01.2018 23:46:00	1.21911	\$ 54.72
359	Buy	12.01.2018 10:00:00	1.20639	0.04	17.01.2018 23:46:00	1.21911	\$ 48.61
360	Buy	15.01.2018 07:00:00	1.22114	0.04	17.01.2018 23:46:00	1.21911	\$ -9.03
361	Buy	18.01.2018 03:00:00	1.21914	0.08	25.01.2018 21:23:00	1.24058	\$ 165.17
362	Buy	18.01.2018 08:00:00	1.2208	0.08	25.01.2018 21:23:00	1.24058	\$ 151.89
363	Buy	18.01.2018 23:00:00	1.22402	0.08	25.01.2018 21:23:00	1.24058	\$ 126.13
364	Buy	26.01.2018 03:00:00	1.2407	0.01	21.05.2018 00:00:00	1.17696	\$ -76.77
366	Buy	31.01.2018 18:00:00	1.24573	0.01	21.05.2018 00:00:00	1.17696	\$ -81.23
365	Buy	26.01.2018 09:00:00	1.24518	0.01	21.05.2018 00:00:00	1.17696	\$ -81.25
367	Sell	21.05.2018 02:00:00	1.17664	0.02	30.05.2018 15:06:00	1.16431	\$ 25.76
368	Sell	21.05.2018 18:00:00	1.17521	0.02	30.05.2018 15:06:00	1.16431	\$ 22.9
369	Sell	23.05.2018 20:00:00	1.16933	0.02	30.05.2018 15:06:00	1.16431	\$ 10.89
370	Sell	30.05.2018 17:00:00	1.16161	0.04	17.08.2018 21:41:00	1.14339	\$ 92.11
371	Sell	15.06.2018 14:00:00	1.15946	0.04	17.08.2018 21:41:00	1.14339	\$ 79.62
372	Sell	18.06.2018 10:00:00	1.15742	0.04	17.08.2018 21:41:00	1.14339	\$ 70.73
373	Sell	20.08.2018 02:00:00	1.14373	0.01	15.11.2018 10:10:00	1.13486	\$ 14.17
374	Sell	20.08.2018 09:00:00	1.14238	0.01	15.11.2018 10:10:00	1.13486	\$ 12.82
375	Sell	24.10.2018 12:00:00	1.14157	0.01	15.11.2018 10:10:00	1.13486	\$ 8.05
376	Sell	15.11.2018 12:00:00	1.1285	0.01	01.05.2019 17:01:00	1.12438	\$ 14.28
377	Sell	28.11.2018 00:00:00	1.12849	0.01	01.05.2019 17:01:00	1.12438	\$ 13.48
378	Sell	28.11.2018 10:00:00	1.12779	0.01	01.05.2019 17:01:00	1.12438	\$ 12.78

381	Sell	02.05.2019 17:00:00	1.1185	0.01	03.05.2019 23:58:00	1.12028	\$ -1.72
380	Sell	02.05.2019 10:00:00	1.11925	0.01	03.05.2019 23:58:00	1.12028	\$ -0.97
379	Sell	01.05.2019 23:00:00	1.11949	0.01	03.05.2019 23:58:00	1.12028	\$ -0.67

Report generated by Quant Analyzer